

SPECIFICATIONS

Size	Fan type	Shaft diameter [inches]					Bearings										
		Full-width fans			Narrow-width fans		Full-width fans					Narrow-width fans					
		Arr. 1, 8, 9	Arr. 9-E, 9-F	Arr. 10	Arr. 1, 8, 9	Arr. 9-E, 9-F	Arr. 1, 9		Arr. 8	Arr. 9-E, 9-F		Arr. 10	Arr. 1, 8, 9		Arr. 8	Arr. 9-E, 9-F	
							Inboard	Outboard		Inboard/Outboard	Inboard		Outboard	Inboard/Outboard		Inboard	Outboard
182	MP HP	17/16 17/16	17/16 17/16	11 1/16 —	17/16 11 1/16	11 1/16 11 1/16	A B	E E	A B	A B	E E	A —	A D	E D	A D	A D	E D
242	MP HP	17/16 11 1/16	11 1/16 11 1/16	11 5/16 —	11 5/16 11 5/16	11 5/16 2 3/16	A D	E E	A D	A D	E E	A —	E D	E D	D D	D D	E D
302	MP HP	11 1/16 1 5/16	11 1/16 1 5/16	2 3/16 —	2 3/16 2 3/16	2 3/16 2 7/16	A E	E E	A D	A E	E E	C —	D E	E E	D D	D D	E D
362	MP HP	11 5/16 2 3/16	2 3/16 2 7/16	2 3/16 —	2 7/16 2 11/16	2 11/16 2 15/16	D E	E E	D D	D E	E E	C —	D D	E D	D D	D D	E D
422	MP HP	2 7/16 2 1 1/16	2 1 1/16 2 1 1/16	— —	2 1 5/16 3 7/16	3 7/16 3 7/16	E E	E E	D D	E E	E E	— —	F F	F F	D D	E F	E F
482	MP HP	2 1 1/16 2 1 1/16	2 1 1/16 2 1 5/16	— —	3 7/16 3 7/16	3 7/16 3 1 5/16	E E	E E	D D	E E	E E	— —	E E	E E	E F	E F	E F
542	MP HP	2 1 5/16 3 7/16	3 7/16 3 7/16	— —	3 1 5/16 3 1 5/16	3 1 5/16 4 7/16	E E	E E	E F	E E	E E	— —	E E	E E	F F	E F	E F
602	MP HP	2 1 5/16 3 7/16	3 7/16 3 7/16	— —	3 1 5/16 3 1 5/16	3 1 5/16 4 7/16	E E	E E	E F	E E	E E	— —	E E	E E	F F	E F	E F

A—Link-Belt P3-U200 ball bearing. B—Sealmaster SPM ball bearing. C—Sealmaster MPD ball bearing. D—Link-Belt P-U300 ball bearing. E—Link-Belt P-B22400 spherical roller bearing. F—Link-Belt P-LB6800 spherical roller bearing. **nyb** reserves the right to substitute bearings of equal quality.

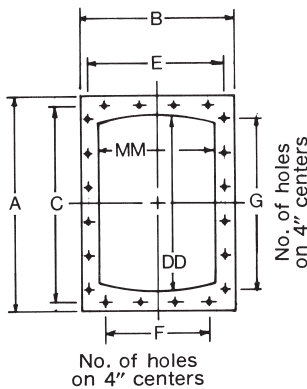
Size	Weights [lbs.]															Wheel WR ² [lb.-ft. ²]	
	Bare fan										Wheel and shaft assembly						
	Arr. 1, 9		Arr. 8		Arr. 9-E		Arr. 9-F		Arr. 10		Arr. 1, 8, 9		Arr. 9-E, 9-F		Arr. 10		
	MP	HP	MP	HP	MP	HP	MP	HP	MP	MP	HP	MP	HP	MP	MP	HP	
182	235	195	310	270	275	235	NA	NA	285	33	31	36	34	40	7	5	
242	430	395	615	585	530	490	NA	NA	450	56	58	67	64	70	23	21	
302	720	645	985	910	775	695	NA	NA	700	86	90	90	96	103	52	48	
362	1280	1400	OA	OA	1380	1540	1725	1885	1020	142	149	164	174	149	131	118	
422	1695	1870	OA	OA	1825	2000	2255	2430	NA	282	286	311	301	NA	369	345	
482	2150	2315	OA	OA	2225	2445	2695	2910	NA	369	355	380	386	NA	619	576	
542	3070	3285	OA	OA	3255	3450	3950	4140	NA	597	614	662	638	NA	1276	1188	
602	3495	3715	OA	OA	3695	3900	4385	4590	NA	660	675	726	699	NA	1886	1756	

NA—Not available. OA—On application.

FLANGED OUTLET DIMENSIONS [Inches]

Furnished as standard [without holes].

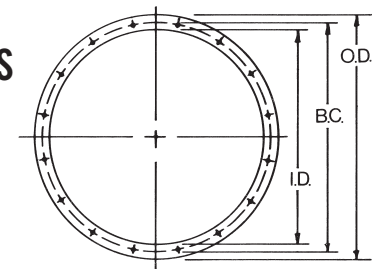
Available with holes drilled as shown.



FLANGED INLET DIMENSIONS [Inches]

Furnished as an option [without holes].

Available with holes drilled as shown.



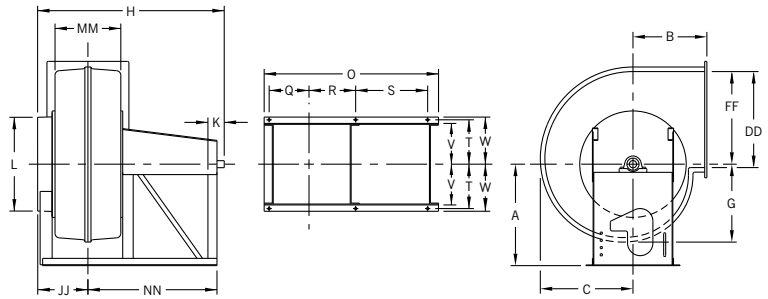
Size	A	B		C	DD	E		F		G	MM		Hole dia.	Flange thickness	Size	O.D.	B.C. [bolt circle]	I.D.	No. and size of holes	Flange thickness
		MP	HP			MP	HP	MP	HP		MP	HP								
182	25 1/8	18	16 1/4	23 3/4	20 3/4	16 5/8	14 7/8	4	2	6	13 5/8	11 7/8	7/16	1/2	182	22 3/8	21	18	16 - 7/16	1/2
242	32 1/8	22 5/8	20 3/8	30 3/4	27 3/4	21 1/4	19	4	4	8	18 1/4	16	7/16	1/2	242	28 3/8	27	24	20 - 7/16	1/2
302	38 3/8	26 3/4	24	37	34	25 3/8	22 5/8	6	4	10	22 3/8	19 5/8	7/16	1/2	302	34 3/8	33	30	28 - 7/16	1/2
362	45 7/8	31 5/8	28 1/2	44 1/2	41 1/2	30 3/4	27 1/8	6	6	12	27 1/4	24 1/8	7/16	5/8	362	40 3/8	39	36	32 - 7/16	1/2
422	54 1/8	37 3/4	34 3/8	51 3/4	47 3/4	35 3/8	31 3/4	8	6	12	31 3/8	27 3/4	9/16	5/8	422	46 3/8	45	42	36 - 7/16	5/8
482	60 7/8	42 1/4	38 1/8	58 1/2	54 1/2	39 7/8	35 3/4	10	8	14	35 7/8	31 3/4	9/16	5/8	482	54 3/8	52	48	44 - 9/16	5/8
542	68	46 7/8	42 1/8	65 5/8	61 5/8	44 1/2	39 3/4	10	8	16	40 1/2	35 3/4	9/16	5/8	542	60 3/8	58	54	44 - 9/16	5/8
602	74 1/2	51 1/4	46 1/8	72 1/8	68 1/8	48 7/8	43 3/4	12	10	18	44 7/8	39 3/4	9/16	5/8	602	66 3/8	64	60	52 - 9/16	5/8

Tolerance: ± 1/64"

ARRANGEMENT 10 FANS

L is OD of collar. DD, FF, and MM are inside dimensions. JJ is from centerline over inlet collar.
Dimensions not to be used for construction unless certified.

DIMENSIONS [INCHES] SIZES 182-362 ROTATABLE HOUSINGS

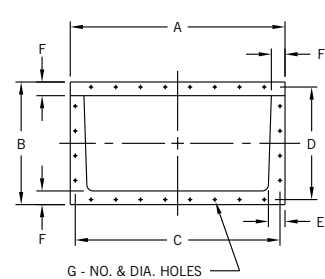
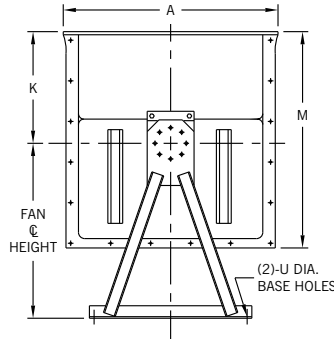
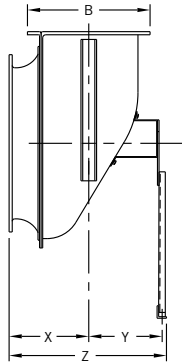
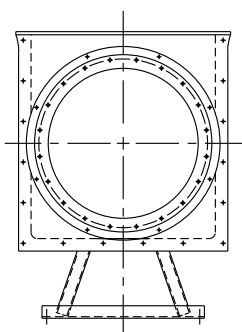


Size	A*	B	C	DD	FF	G	H	JJ	K	L	MM	NN	O
182	21 ¹ / ₄	16	20 ³ / ₈	20 ³ / ₄	19 ¹ / ₂	17 ³ / ₈	41 ¹ / ₈	10 ¹ / ₂	3 ¹ / ₂	18 ¹ / ₂	13 ⁵ / ₈	29	38 ³ / ₄
242	28	20	26 ³ / ₄	27 ³ / ₄	26 ¹ / ₄	22 ⁵ / ₈	50 ³ / ₈	12 ⁷ / ₈	4 ¹ / ₂	24 ¹ / ₂	18 ¹ / ₄	35 ³ / ₈	48 ¹ / ₈
302	32 ¹ / ₂	23 ¹ / ₂	32 ³ / ₈	34	32 ¹ / ₈	27 ³ / ₈	57 ¹ / ₂	16	5 ¹ / ₂	30 ⁵ / ₈	22 ³ / ₈	38 ³ / ₈	53 ¹ / ₄
362	39 ¹ / ₂	29	39 ¹ / ₄	41 ¹ / ₂	39 ¹ / ₈	33 ¹ / ₄	66 ¹ / ₂	19 ¹ / ₂	5 ¹ / ₂	36 ⁵ / ₈	27 ¹ / ₄	43 ⁷ / ₈	61 ¹ / ₄

Size	Q	R	S	T	V	W	a	b	c	d	Square key	Base hole dia.	Max. motor frame size		Max. motor limitation C-NW
													Open	TEFC	
182	8 ⁵ / ₈	9 ³ / ₈	17 ³ / ₈	9 ³ / ₈	8 ¹ / ₄	10 ¹ / ₄	19 ¹ / ₈	26 ³ / ₄	21	15 ³ / ₄	3/8	5/8	215T	215T	16 ⁵ / ₈
242	11 ³ / ₈	12 ¹ / ₂	19 ⁷ / ₈	12 ¹ / ₄	11	13	25	34 ¹ / ₄	27 ⁵ / ₈	20 ³ / ₈	1/2	5/8	256T	254T	18 ⁵ / ₈
302	13 ³ / ₈	14 ⁵ / ₈	20 ³ / ₄	13 ⁵ / ₈	11 ³ / ₄	14 ³ / ₄	30 ¹ / ₄	40 ⁷ / ₈	33 ¹ / ₄	24 ⁵ / ₈	1/2	5/8	284T	256T	19 ¹ / ₂
362	15 ⁷ / ₈	17 ¹ / ₈	23 ³ / ₄	16	14	17	36 ³ / ₄	49 ³ / ₄	40 ⁵ / ₈	29 ⁷ / ₈	1/2	5/8	284T	284T	22 ¹ / ₂

*Add 3" for Bottom Horizontal or Bottom Angular Up discharges. C-NW is maximum motor case length [NEMA C minus NEMA NW]. Tolerance: ± 1/16"

INLET BOXES FOR FRP FUME EXHAUSTERS



Dimensions not to be used for construction unless certified.

1. Rectangular flange is furnished without holes as standard...available with holes on 4" centers straddling centerlines.
2. Round flange is furnished with holes to match drilling pattern of flanged inlet.
3. Base-bar dimensions match fan base-bar dimensions.

DIMENSIONS [INCHES]

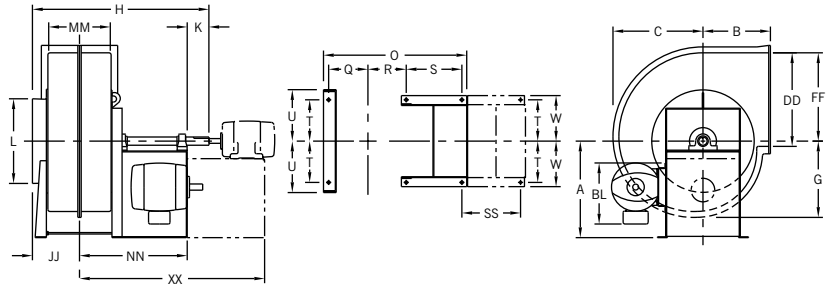
Size	Fan inlet area [ft. ²]	A	B	C	D	E	F	G		K	M	U		X	Y	Z	Wt. [lbs.]
								No.	Dia.			Base hole diameter					
												Arr. 1, 8, 9	Arr. 10				
182	1.76	26 ⁷ / ₈	15 ⁷ / ₈	25 ¹ / ₂	14 ¹ / ₂	29 ¹ / ₁₆	23 ¹ / ₁₆	16	7/16	13 ¹ / ₂	26 ¹ / ₂	9/16	5/8	10 ³ / ₄	9 ³ / ₄	21 ¹ / ₈	75
242	3.14	34 ³ / ₈	19 ⁵ / ₈	33	18 ¹ / ₄	21 ¹ / ₁₆	23 ¹ / ₁₆	24	7/16	17 ⁷ / ₈	34 ⁵ / ₈	3/4	5/8	12 ³ / ₄	11 ¹ / ₄	24 ⁵ / ₈	103
302	4.90	41 ⁷ / ₈	23 ¹ / ₂	40 ¹ / ₂	22 ¹ / ₈	27 ⁷ / ₈	23 ¹ / ₁₆	28	7/16	22 ³ / ₈	42 ⁷ / ₈	3/4	5/8	15 ³ / ₄	13 ³ / ₈	30	138
362	7.07	49 ³ / ₈	27 ¹ / ₄	48	25 ⁷ / ₈	3	23 ¹ / ₁₆	36	7/16	26 ⁷ / ₈	51 ¹ / ₈	7/8	5/8	18 ³ / ₄	14 ³ / ₄	34 ³ / ₈	184
422	9.62	56 ⁷ / ₈	31 ¹ / ₈	55 ¹ / ₂	29 ³ / ₄	3 ¹ / ₈	23 ¹ / ₁₆	44	7/16	31 ³ / ₈	59 ¹ / ₂	7/8	-	21 ³ / ₄	16 ¹ / ₂	39 ¹ / ₈	262
482	12.56	66 ⁵ / ₈	37 ¹ / ₈	64 ¹ / ₄	34 ³ / ₄	4 ¹ / ₄	33 ¹ / ₁₆	48	9/16	35 ⁷ / ₈	67 ³ / ₄	7/8	-	25 ¹ / ₈	21 ⁵ / ₈	48 ¹ / ₈	374
542	15.90	74 ¹ / ₈	40 ⁷ / ₈	71 ³ / ₄	38 ¹ / ₂	4 ³ / ₈	33 ¹ / ₁₆	56	9/16	40 ³ / ₈	76	1	-	28	23 ³ / ₈	52 ³ / ₄	575

Tolerance: ± 1/16"

ARRANGEMENTS 1, 8, 9, 9-E FANS

L is OD of collar. DD, FF, and MM are inside dimensions. JJ is from centerline over inlet collar.
Dimensions not to be used for construction unless certified.

DIMENSIONS [INCHES] SIZES 182-302 ROTATABLE HOUSINGS



ARRANGEMENTS 1, 8, 9, 9-E FANS

Size	A	B	C		DD	FF	G		JJ		K	L	MM	
			MP	HP			MP	HP	MP	HP			MP	HP
182	21 ³ / ₄	16	20 ³ / ₈	18 ³ / ₄	20 ³ / ₄	19 ¹ / ₂	17 ³ / ₈	15 ³ / ₄	10 ¹ / ₂	9 ⁵ / ₈	4	18 ¹ / ₂	13 ⁵ / ₈	11 ⁷ / ₈
242	28 ⁵ / ₈	20	26 ³ / ₄	25 ¹ / ₄	27 ³ / ₄	26 ¹ / ₄	22 ⁵ / ₈	21 ¹ / ₈	12 ⁷ / ₈	11 ³ / ₄	5	24 ¹ / ₂	18 ¹ / ₄	16
302	34 ³ / ₄	23 ¹ / ₂	32 ³ / ₈	30 ⁷ / ₈	34	32 ¹ / ₈	27 ³ / ₈	26	16	14 ⁵ / ₈	5 ¹ / ₂	30 ⁵ / ₈	22 ³ / ₈	19 ⁵ / ₈

Size	Q		R		T	U	W	a	b	c	d	BL†	Base hole diameter
	MP	HP	MP	HP									
182	8 ⁵ / ₈	7 ³ / ₄	8 ⁷ / ₈	8	9 ³ / ₈	10 ⁷ / ₈	10 ¹ / ₄	19 ¹ / ₈	26 ³ / ₄	21	15 ³ / ₄	17 ¹ / ₄	5 ⁸ / ₁₆
242	11 ¹ / ₂	10 ³ / ₈	11 ³ / ₄	10 ⁵ / ₈	12 ¹ / ₄	14 ³ / ₈	13 ¹ / ₂	25	34 ¹ / ₄	27 ⁵ / ₈	20 ³ / ₈	23 ¹ / ₄	3 ⁴ / ₁₆
302	13 ³ / ₄	12 ³ / ₈	13 ⁷ / ₈	12 ¹ / ₂	14 ⁷ / ₈	16 ⁷ / ₈	16 ¹ / ₈	30 ¹ / ₄	40 ⁷ / ₈	33 ¹ / ₄	24 ⁵ / ₈	28 ³ / ₄	3 ⁴ / ₁₆

† For Arrangement 9 and 9E fans only. BL = slide base (AL + BT) / 2 + motor AB.

Tolerance: ± 1/32"

ARRANGEMENTS 1, 8, 9 FANS

Size	H		NN		O		S	Max. motor limitation*	
	MP	HP	MP	HP	MP	HP		C-NW	Frame
	182	38 ⁵ / ₈	36 ⁷ / ₈	24 ¹ / ₈	23 ¹ / ₄	34 ¹ / ₄	32 ¹ / ₂	13 ³ / ₄	15 ¹ / ₂
242	46 ³ / ₄	44 ¹ / ₂	28 ⁷ / ₈	27 ³ / ₄	42 ¹ / ₂	40 ¹ / ₄	15 ¹ / ₄	18	215T
302	56 ¹ / ₂	53 ³ / ₄	35	33 ⁵ / ₈	50 ³ / ₄	48	19 ¹ / ₄	22	256T

* For Arrangement 9 fans only. C-NW is maximum motor case length [NEMA C minus NEMA NW].

Tolerance: ± 1/32"

ARRANGEMENT 8 FANS

Size	Motor frame	XX		SS
		MP	HP	
182	143T-145T	39	38 ¹ / ₈	15
	182T-184T	40 ¹ / ₂	39 ⁵ / ₈	16 ¹ / ₂
	213T-215T	43 ³ / ₈	42 ¹ / ₂	19 ³ / ₈
	254T-256T	47 ³ / ₄	46 ⁷ / ₈	23 ³ / ₄
242	182T-184T	46 ³ / ₈	45 ¹ / ₄	17 ¹ / ₂
	213T-215T	49 ¹ / ₄	48 ¹ / ₈	20 ³ / ₈
	254T-256T	53 ⁵ / ₈	52 ¹ / ₂	24 ³ / ₄
	284TS-286TS	55 ³ / ₈	54 ¹ / ₄	26 ¹ / ₂
302	324TS-326TS	57 ³ / ₈	56 ¹ / ₄	28 ¹ / ₂
	213T-215T	56 ³ / ₈	55	21 ³ / ₈
	254T-256T	60 ³ / ₄	59 ³ / ₈	25 ³ / ₄
302	284TS-286TS	62 ¹ / ₂	61 ¹ / ₈	27 ¹ / ₂
	324TS-326TS	64 ¹ / ₂	63 ¹ / ₈	29 ¹ / ₂

Tolerance: ± 1/32"

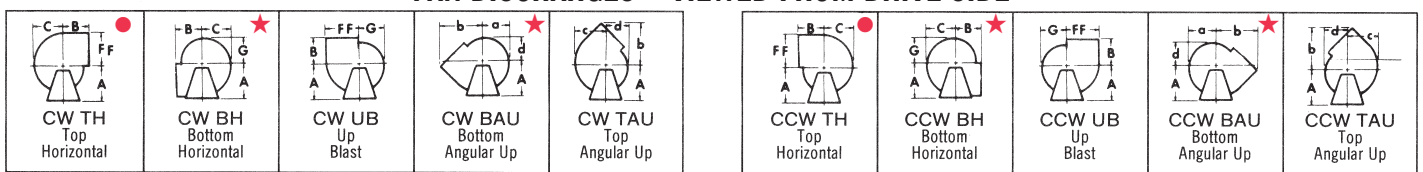
ARRANGEMENT 9-E FANS

Size	H		NN		O		S	Max. motor limitation	
	MP	HP	MP	HP	MP	HP		C-NW	Frame
	182	45 ¹ / ₈	43 ³ / ₈	30 ⁵ / ₈	29 ³ / ₄	40 ³ / ₄	39	20 ¹ / ₄	22
242	55 ³ / ₄	53 ¹ / ₂	37 ⁷ / ₈	36 ³ / ₄	51 ¹ / ₂	49 ¹ / ₄	24 ¹ / ₄	27	326T
302	63 ¹ / ₂	60 ³ / ₄	42	40 ⁵ / ₈	57 ³ / ₄	55	26 ¹ / ₄	29	365T

C-NW is maximum motor case length [NEMA C minus NEMA NW].

Tolerance: ± 1/32"

FAN DISCHARGES – VIEWED FROM DRIVE SIDE



Clockwise—angular discharges at 45°

Counterclockwise—angular discharges at 45°

★ If inlet box is furnished on Sizes 362 to 602 in Top Horizontal fan position, inlet box may extend below floor line.

★ Arrangement 10 fans with Bottom Horizontal or Bottom Angular Up discharges are equipped with a 3-inch channel sub-base...add 3" to the fan centerline height.

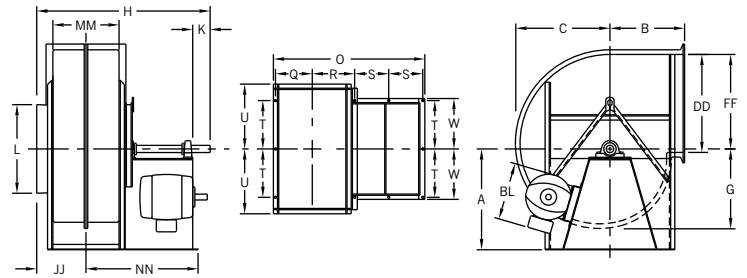
The New York Blower Company has a policy of continuous product development and reserves the right to change designs and specifications without notice.

ARRANGEMENTS 1, 9, 9-E, 9-F FANS

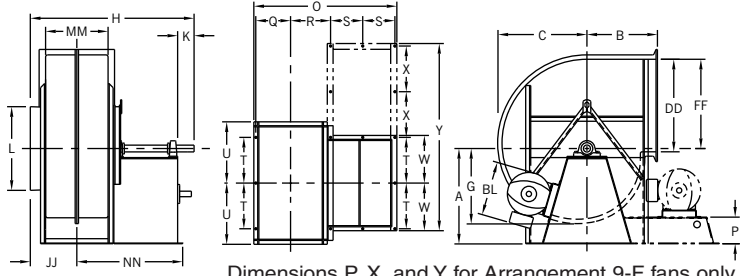
L is OD of collar. DD, FF, and MM are inside dimensions. JJ is from centerline over inlet collar.
Dimensions not to be used for construction unless certified.

DIMENSIONS [INCHES]
SIZES 362-602
NON-ROTATABLE
HOUSINGS

ARRANGEMENTS 1, 9 FANS



ARRANGEMENTS 9-E, 9-F FANS



Dimensions P, X, and Y for Arrangement 9-F fans only.

ARRANGEMENTS 1, 9 FANS

Size	H		NN		O		S	Max. motor limitation*	
	MP	HP	MP	HP	MP	HP		C-NW	Frame
362	69 ⁷ / ₈	66 ³ / ₄	46 ¹ / ₄	44 ⁵ / ₈	63 ¹ / ₈	60	13	22	256T
422	80 ¹ / ₄	76 ⁵ / ₈	53 ³ / ₈	51 ¹ / ₂	72 ³ / ₈	68 ³ / ₄	15 ¹ / ₂	27	326T
482	86 ³ / ₄	82 ⁵ / ₈	57 ⁵ / ₈	55 ¹ / ₂	78 ⁷ / ₈	74 ³ / ₄	16 ¹ / ₂	29	365T
542	94	89 ¹ / ₄	63	60 ⁵ / ₈	87 ⁵ / ₈	82 ⁷ / ₈	17	29	365T
602	98 ⁷ / ₈	93 ³ / ₄	65 ¹ / ₈	62 ⁵ / ₈	92	86 ⁷ / ₈	17	29	365T

* For Arrangement 9 fans only.
C-NW is maximum motor case length [NEMA C minus NEMA NW].
Tolerance: ± 1/16"

ARRANGEMENTS 1, 9, 9-E, 9-F FANS

Size	A				B	C		DD	FF	G		JJ		K	L	MM	
	TH	BH, BAU	UB, TAU			MP	HP			MP	HP	MP	HP			MP	HP
362	34	44 ¹ / ₂	40	29	39 ¹ / ₄	37 ⁵ / ₈	41 ¹ / ₂	39 ¹ / ₈	33 ¹ / ₄	31 ⁵ / ₈	19 ¹ / ₂	17 ⁷ / ₈	7	36 ⁵ / ₈	27 ¹ / ₄	24 ¹ / ₈	
422	39	51	46	32 ¹ / ₂	44 ⁷ / ₈	43 ¹ / ₄	47 ³ / ₄	44 ⁷ / ₈	38	36 ³ / ₈	21 ³ / ₄	19 ⁷ / ₈	8	42 ³ / ₄	31 ³ / ₈	27 ³ / ₄	
482	44	57 ¹ / ₂	52	36 ¹ / ₂	51	49 ³ / ₈	54 ¹ / ₂	51 ³ / ₈	43 ¹ / ₈	41 ¹ / ₂	24	21 ⁷ / ₈	8	48 ³ / ₄	35 ⁷ / ₈	31 ³ / ₄	
542	49 ¹ / ₂	65	59	42 ¹ / ₂	57 ⁵ / ₈	55 ⁷ / ₈	61 ⁵ / ₈	58 ¹ / ₈	48 ³ / ₄	46 ⁷ / ₈	26 ⁷ / ₈	24 ¹ / ₂	8	55	40 ¹ / ₂	35 ³ / ₄	
602	54 ¹ / ₂	71 ¹ / ₂	64 ¹ / ₂	46	63 ¹ / ₂	61 ³ / ₄	68 ¹ / ₈	64 ¹ / ₄	53 ⁵ / ₈	51 ⁷ / ₈	29 ¹ / ₂	27	8	61	44 ⁷ / ₈	39 ³ / ₄	

Size	Q		R		T	U	W	a	b	c	d	BL†	Base hole Dia.
	MP	HP	MP	HP									
362	15 ⁵ / ₈	14 ¹ / ₈	18 ³ / ₄	17 ¹ / ₈	17 ¹ / ₂	25	19	36 ³ / ₄	49 ³ / ₄	40 ⁵ / ₈	29 ⁷ / ₈	23 ¹ / ₂	7/8
422	17 ³ / ₄	16	20 ⁷ / ₈	19	20	28 ¹ / ₈	21 ¹ / ₂	41 ⁷ / ₈	57	46 ¹ / ₄	34	30 ¹ / ₄	7/8
482	20	18	23 ¹ / ₈	21	23	31 ³ / ₈	24 ¹ / ₂	47 ¹ / ₂	64 ¹ / ₂	56 ³ / ₄	38 ⁵ / ₈	31 ¹ / ₄	7/8
542	22 ⁷ / ₈	20 ¹ / ₂	27	24 ⁵ / ₈	25	35 ⁷ / ₈	26 ¹ / ₂	53 ⁷ / ₈	73 ³ / ₈	59 ¹ / ₂	43 ⁵ / ₈	35 ¹ / ₄	1
602	25 ¹ / ₈	22 ¹ / ₂	29 ¹ / ₈	26 ⁵ / ₈	26 ¹ / ₂	39	28 ¹ / ₂	59	80 ³ / ₈	62 ³ / ₈	45 ³ / ₄	39 ¹ / ₄	1

† For Arrangement 9 and 9E fans only. BL = slide base (AL + BT) / 2 + motor AB.

Tolerance: ± 1/16"

ARRANGEMENTS 9-E, 9-F FANS

Size	H		NN		O		S	Arrangement 9-F fans only			Maximum motor limitations			
	MP	HP	MP	HP	MP	HP		P	X	Y	Arrangement 9-E		Arrangement 9-F	
											C-NW	Motor frame	C-NW	Motor frame
362	79 ⁷ / ₈	76 ³ / ₄	56 ¹ / ₄	54 ⁵ / ₈	73 ¹ / ₈	70	18	19	76	32	404T	35	405T	
422	89 ¹ / ₄	85 ⁵ / ₈	62 ³ / ₈	60 ¹ / ₂	81 ³ / ₈	77 ³ / ₄	20	19	81	36	405T	39	445T	
482	93 ³ / ₄	89 ⁵ / ₈	64 ⁵ / ₈	62 ¹ / ₂	85 ⁷ / ₈	81 ³ / ₄	20	21	91	36	405T	39	445T	
542	103	98 ¹ / ₄	72	69 ⁵ / ₈	96 ⁵ / ₈	91 ⁷ / ₈	21 ¹ / ₂	25	104	38	405T	42	447TS	
602	107 ⁷ / ₈	102 ³ / ₄	74 ¹ / ₈	71 ⁵ / ₈	101	95 ⁷ / ₈	21 ¹ / ₂	25	107	38	405T	42	447TS	

NOTE: Sizes 362-602 Arrangement 8 pedestal dimensions are dependent on motor size.

Tolerance: ± 1/16"