

SPECIFICATIONS



Size	Fan type	Shaft diameter [inches]			Bearings					
		Arr. 1, 8, 9	Arr. 9-E, 9-F	Arr. 10	Arr. 1, 9		Arr. 8	Arr. 9-E, 9-F		Arr. 10
					Inboard	Outboard	Inboard/outboard	Inboard	Outboard	Inboard/outboard
121	MP	1 ³ / ₁₆	—	1 ³ / ₁₆	A	A	A	—	—	A
151	MP	1 ⁷ / ₁₆	—	1 ⁷ / ₁₆	A	A	A	—	—	A
181	MP	1 ¹¹ / ₁₆	1 ¹¹ / ₁₆	1 ¹¹ / ₁₆	A	A	A	A	A	A
	HP	1 ¹⁵ / ₁₆	1 ¹⁵ / ₁₆	—	A	A	A	A	A	—
241	MP	1 ¹⁵ / ₁₆	1 ¹⁵ / ₁₆	1 ¹⁵ / ₁₆	A	A	A	A	A	A
	HP	1 ¹⁵ / ₁₆	1 ¹⁵ / ₁₆	—	A	E	A	A	E	—
301	MP	1 ¹⁵ / ₁₆	1 ¹⁵ / ₁₆	2 ³ / ₁₆	A	E	A	A	E	C
	HP	2 ³ / ₁₆	2 ³ / ₁₆	—	A	E	A	A	E	—
361	MP	1 ¹⁵ / ₁₆	2 ³ / ₁₆	2 ³ / ₁₆	A	E	A	A	E	C
	HP	2 ³ / ₁₆	2 ³ / ₁₆	—	E	E	C	E	E	—
421	MP	2 ¹¹ / ₁₆	2 ¹¹ / ₁₆	—	A	E	A	A	E	—
	HP	2 ¹¹ / ₁₆	2 ¹⁵ / ₁₆	—	E	E	C	E	E	—
481	MP	2 ¹¹ / ₁₆	2 ¹¹ / ₁₆	—	A	E	A	A	E	—
	HP	2 ¹⁵ / ₁₆	2 ¹⁵ / ₁₆	—	E	E	C	E	E	—
541	MP	3 ⁷ / ₁₆	3 ⁷ / ₁₆	—	A	E	C	A	E	—
	HP	3 ⁷ / ₁₆	3 ⁷ / ₁₆	—	E	E	C	E	E	—
601	MP	3 ⁷ / ₁₆	3 ⁷ / ₁₆	—	A	E	C	A	E	—
	HP	3 ⁷ / ₁₆	3 ¹⁵ / ₁₆	—	E	E	C	E	E	—

A—Link Belt P3-U200 ball bearing. C—Sealmaster MPD ball bearing. E—Linkbelt P-B22400 spherical roller bearing. **nyb** reserves the right to substitute bearings of equal quality.

Size	Weights [lbs.]														Wheel WR ² [lb.-ft. ²]		
	Bare fan						Wheel and shaft assembly										
	Arr. 1, 9		Arr. 8		Arr. 9-E		Arr. 9-F		Arr. 10		Arr. 1, 8, 9		Arr. 9-E, 9-F		Arr. 10		
	MP	HP	MP	HP	MP	HP	MP	HP	MP	HP	MP	HP	MP	HP	MP	HP	
121	135	NA	175	NA	NA	NA	NA	NA	NA	135	18	NA	NA	NA	18	2	NA
151	175	NA	230	NA	NA	NA	NA	NA	NA	170	26	NA	NA	NA	26	4	NA
181	230	195	305	270	270	240	NA	NA	NA	240	35	39	39	44	37	10	9
241	415	375	600	565	490	455	NA	NA	NA	410	55	54	60	59	59	26	25
301	690	615	955	880	730	655	NA	NA	NA	605	76	79	80	84	86	57	56
361	1180	1080	OA	OA	1220	1110	1535	1420	795	94	100	108	104	102	117	117	115
421	1525	1390	OA	OA	1555	1430	1920	1790	NA	192	186	198	207	NA	293	287	287
481	1875	1690	OA	OA	1910	1725	2295	2115	NA	233	239	239	246	NA	499	489	489
541	2765	2495	OA	OA	2805	2535	3370	3100	NA	378	366	388	377	NA	922	903	903
601	3195	2870	OA	OA	3240	3005	3800	3570	NA	461	445	471	505	NA	1445	1416	1416

NA—Not available. OA—On application.

FLANGED OUTLET DIMENSIONS [Inches]

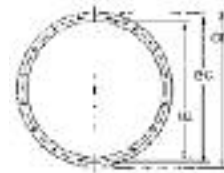
Furnished as standard [without holes].

Available with holes drilled as shown.

FLANGED INLET DIMENSIONS [Inches]

Furnished as an option [without holes].

Available with holes drilled as shown.



Size	A	B		C	DD	E		F		G	MM		Hole dia.	Flange thickness	Size	O.D.	B.C. [bolt circle]	I.D.	No. and size of holes	Flange thickness
		MP	HP			MP	HP	MP	HP		MP	HP								
121	18 ¹ / ₈	13 ¹ / ₂	—	16 ⁵ / ₈	13 ³ / ₄	12	—	4	—	4	9 ¹ / ₈	—	7 ¹ / ₁₆	3 ⁸ / ₁₆	121	15 ³ / ₄	14 ⁵ / ₈	12 ¹ / ₂	8-7 ¹ / ₁₆	1 ¹ / ₄
151	21 ¹ / ₄	15 ¹ / ₂	—	19 ³ / ₄	16 ⁷ / ₈	14	—	4	—	4	11 ¹ / ₈	—	7 ¹ / ₁₆	3 ⁸ / ₁₆	151	19 ¹ / ₄	17 ⁷ / ₈	15 ¹ / ₂	8-7 ¹ / ₁₆	1 ¹ / ₄
181	25 ¹ / ₈	18	16 ¹ / ₄	23 ³ / ₄	20 ³ / ₄	16 ⁵ / ₈	14 ⁷ / ₈	4	2	6	13 ⁵ / ₈	11 ⁷ / ₈	7 ¹ / ₁₆	1 ² / ₂	181	23 ¹ / ₂	21 ³ / ₄	19	16-7 ¹ / ₁₆	1 ¹ / ₄
241	32 ¹ / ₈	22 ⁵ / ₈	20 ³ / ₈	30 ³ / ₄	27 ³ / ₄	21 ¹ / ₄	19	4	4	8	18 ¹ / ₄	16	7 ¹ / ₁₆	1 ² / ₂	241	30 ⁷ / ₈	29 ¹ / ₈	26	16-7 ¹ / ₁₆	1 ¹ / ₄
301	38 ³ / ₈	26 ³ / ₄	24	37	34	25 ³ / ₈	22 ⁵ / ₈	6	4	10	22 ³ / ₈	19 ⁵ / ₈	7 ¹ / ₁₆	1 ² / ₂	301	37 ¹ / ₈	35 ¹ / ₈	32	16-7 ¹ / ₁₆	5 ¹ / ₁₆
361	45 ⁷ / ₈	31 ⁵ / ₈	28 ¹ / ₂	44 ¹ / ₂	41 ¹ / ₂	30 ³ / ₄	27 ¹ / ₈	6	6	12	27 ¹ / ₄	24 ³ / ₈	7 ¹ / ₁₆	5 ⁸ / ₁₆	361	44 ³ / ₈	42 ³ / ₈	38	16-7 ¹ / ₁₆	5 ¹ / ₁₆
421	54 ¹ / ₈	37 ³ / ₄	34 ¹ / ₈	51 ³ / ₄	47 ³ / ₄	35 ³ / ₈	31 ³ / ₄	8	6	12	31 ³ / ₈	27 ³ / ₄	9 ¹ / ₁₆	5 ⁸ / ₁₆	421	50 ¹ / ₂	48 ¹ / ₂	44	24-9 ¹ / ₁₆	3 ⁸ / ₁₆
481	60 ⁷ / ₈	42 ¹ / ₄	38 ¹ / ₈	58 ¹ / ₂	54 ¹ / ₂	39 ⁷ / ₈	35 ³ / ₄	10	8	14	35 ⁷ / ₈	31 ³ / ₄	9 ¹ / ₁₆	5 ⁸ / ₁₆	481	57	55 ¹ / ₈	50	24-9 ¹ / ₁₆	3 ⁸ / ₁₆
541	68	46 ⁷ / ₈	42 ¹ / ₈	65 ³ / ₈	61 ¹ / ₈	44 ¹ / ₂	39 ³ / ₄	10	8	16	40 ¹ / ₂	35 ³ / ₄	9 ¹ / ₁₆	5 ⁸ / ₁₆	541	64	62 ¹ / ₈	56	24-9 ¹ / ₁₆	1 ² / ₂
601	74 ¹ / ₂	51 ¹ / ₄	46 ¹ / ₈	72 ¹ / ₈	68 ¹ / ₈	48 ⁷ / ₈	43 ³ / ₄	12	10	18	44 ⁷ / ₈	39 ³ / ₄	9 ¹ / ₁₆	5 ⁸ / ₁₆	601	70 ¹ / ₂	68 ³ / ₈	62	32-9 ¹ / ₁₆	1 ² / ₂

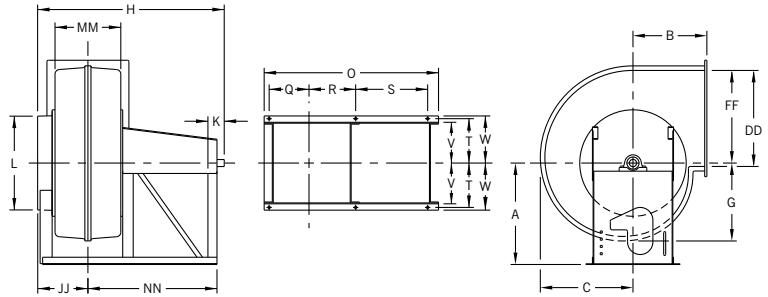
Tolerance: ± 1/32"

Tolerance: ± 1/32"

ARRANGEMENT 10 FANS

L is OD of collar. DD, FF, and MM are inside dimensions. JJ is from centerline over inlet collar.
Dimensions not to be used for construction unless certified.

DIMENSIONS [INCHES] SIZES 121-361 ROTATABLE HOUSINGS

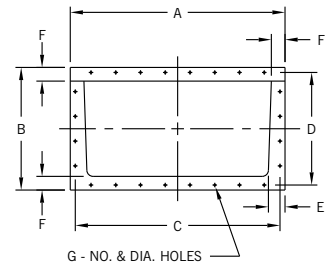
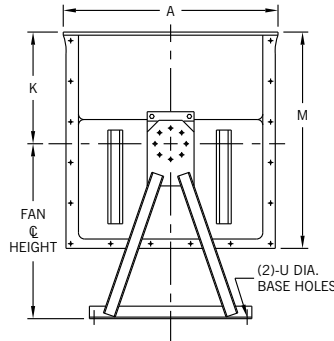
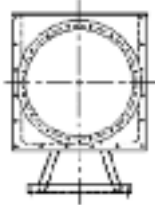


Size	A*	B	C	DD	FF	G	H	JJ	K	L	MM	NN	O
121	15 1/2	12	14 1/4	13 3/4	12 11/16	12 1/4	33 3/8	8 1/8	2 1/2	13	9 1/8	24 5/8	32 1/2
151	17 1/2	14 5/8	17 1/8	16 7/8	15 13/16	14 5/8	37 7/8	9 1/8	3	16	11 1/8	27 5/8	36 1/2
181	21 1/4	16	20 3/8	20 3/4	19 1/2	17 3/8	40 7/8	10 3/8	3 1/2	19 1/2	13 5/8	28 7/8	38 3/4
241	28	20	26 3/4	27 3/4	26 1/4	22 5/8	50 1/8	12 3/4	4 1/2	26 1/2	18 1/4	35 3/8	48 1/8
301	32 1/2	23 1/2	32 3/8	34	32 1/8	27 3/8	57 3/8	15 7/8	5 1/2	32 5/8	22 3/8	38 3/8	53 1/4
361	39 1/2	29	39 1/4	41 1/2	39 1/8	33 1/4	66 3/8	19 3/8	5 1/2	38 5/8	27 1/4	43 7/8	61 1/4

Size	Q	R	S	T	V	W	a	b	c	d	Square key	Base hole dia.	Max. motor frame size		Max. motor limitation C-NW
													Open	TEFC	
121	6 1/8	6 1/2	16 3/8	7 3/8	6 1/2	8	13 1/2	19 3/8	14 3/4	11 1/8	1/4	5/8	215T	184T	14 1/2
151	7 1/8	8 5/8	17 3/8	8 7/8	8	9 1/2	16 1/8	23 1/4	17 5/8	13 3/8	3/8	5/8	215T	215T	16 5/8
181	8 5/8	9 3/8	17 3/8	9 3/8	8 1/4	10 1/4	19 1/8	26 3/4	21	15 3/4	3/8	5/8	215T	215T	16 5/8
241	11 3/8	12 1/2	19 7/8	12 1/4	11	13	25	34 1/4	27 5/8	20 3/8	1/2	5/8	256T	254T	18 5/8
301	13 3/8	14 5/8	20 3/4	13 5/8	11 3/4	14 3/4	30 1/4	40 7/8	33 1/4	24 5/8	1/2	5/8	284T	256T	19 1/2
361	15 7/8	17 1/8	23 3/4	16	14	17	36 3/4	49 3/4	40 5/8	29 7/8	1/2	5/8	284T	284T	22 1/2

*Add 3" for Bottom Horizontal or Bottom Angular Up discharges. C-NW is maximum motor case length [NEMA C minus NEMA NW]. Tolerance: ± 1/16"

INLET BOXES FOR FRP GENERAL-PURPOSE FUME EXHAUSTERS



Dimensions not to be used for construction unless certified.

1. Rectangular flange is furnished without holes as standard...available with holes on 4" centers straddling centerlines.
2. Round flange is furnished with holes to match drilling pattern of flanged inlet.
3. Base-bar dimensions match fan base-bar dimensions.

DIMENSIONS [INCHES]

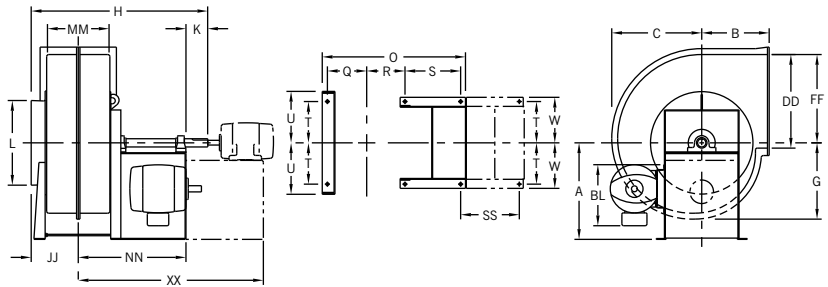
Size	Fan inlet area [ft.²]	A	B	C	D	E	F	G		K	M	U Base hole diameter	X	Y	Z	Wt. [lbs.]
								No.	Dia.							
181	1.97	26 7/8	15 7/8	25 1/2	14 1/2	29 1/16	23 1/16	16	7 1/16	13 1/2	26 1/2	5/8	6	9 3/4	16 3/8	69
241	3.69	34 3/8	19 5/8	33	18 1/4	21 1/16	23 1/16	24	7 1/16	17 7/8	34 5/8	5/8	7 7/8	11 1/4	19 3/4	95
301	5.59	41 7/8	23 1/2	40 1/2	22 1/8	27 7/8	23 1/16	28	7 1/16	22 3/8	42 7/8	5/8	9 7/8	13 3/8	24 1/8	128
361	7.88	49 3/8	27 1/4	48	25 7/8	3	23 1/16	36	7 1/16	26 7/8	51 1/8	5/8	11 3/4	14 3/4	27 3/8	170
421	10.56	56 7/8	31 1/8	55 1/2	29 3/4	3 1/8	23 1/16	44	7 1/16	31 3/8	59 1/2	7/8	13 5/8	16 1/2	31	262
481	13.64	66 5/8	37 1/8	64 1/4	34 3/4	4 1/4	33 1/16	48	9 1/16	35 7/8	67 3/4	7/8	15 3/4	21 5/8	38 3/4	374
541	17.10	74 1/8	40 7/8	71 3/4	38 1/2	4 3/8	33 1/16	56	9 1/16	40 3/8	76	1	18	23 3/8	42 3/4	575

Tolerance: ± 1/16"

ARRANGEMENTS 1, 8, 9, 9-E FANS

L is OD of collar. DD, FF, and MM are inside dimensions. JJ is from centerline over inlet collar.
Dimensions not to be used for construction unless certified.

DIMENSIONS [INCHES] SIZES 121-301 ROTATABLE HOUSINGS



ARRANGEMENTS 1, 8, 9, 9-E FANS

Size	A	B	C		DD	FF	G		JJ		K	L	MM	
			MP	HP			MP	HP	MP	HP			MP	HP
121	16	12	14 ¹ / ₄	NA	13 ³ / ₄	12 ¹¹ / ₁₆	12 ¹ / ₄	NA	8 ¹ / ₈	NA	2 ¹ / ₂	13	9 ¹ / ₈	NA
151	19	14 ⁵ / ₈	17 ¹ / ₈	NA	16 ⁷ / ₈	15 ¹³ / ₁₆	14 ⁵ / ₈	NA	9 ¹ / ₈	NA	3	16	11 ¹ / ₈	NA
181	21 ³ / ₄	16	20 ³ / ₈	18 ³ / ₄	20 ³ / ₄	19 ¹ / ₂	17 ³ / ₈	15 ³ / ₄	10 ³ / ₈	9 ¹ / ₂	4	19 ¹ / ₂	13 ⁵ / ₈	11 ⁷ / ₈
241	28 ⁵ / ₈	20	26 ³ / ₄	25 ¹ / ₄	27 ³ / ₄	26 ¹ / ₄	22 ⁵ / ₈	21 ¹ / ₈	12 ³ / ₄	11 ⁵ / ₈	4 ¹ / ₂	26 ¹ / ₂	18 ¹ / ₄	16
301	34 ³ / ₄	23 ¹ / ₂	32 ³ / ₈	30 ⁷ / ₈	34	32 ¹ / ₈	27 ³ / ₈	26	15 ⁷ / ₈	14 ¹ / ₂	5	32 ⁵ / ₈	22 ³ / ₈	19 ⁵ / ₈

Size	Q		R		T	U	W	a	b	c	d	BL†	Base hole diameter
	MP	HP	MP	HP									
121	6 ³ / ₈	NA	6 ¹ / ₂	NA	7 ³ / ₈	8 ⁷ / ₈	8	13 ¹ / ₂	19 ³ / ₈	14 ³ / ₄	11 ¹ / ₈	16 ³ / ₈	5 ⁸ / ₈
151	7 ³ / ₈	NA	7 ¹ / ₂	NA	8 ⁷ / ₈	10 ³ / ₈	9 ¹ / ₂	16 ¹ / ₈	23 ¹ / ₄	17 ⁵ / ₈	13 ³ / ₈	16 ³ / ₈	5 ⁸ / ₈
181	8 ⁵ / ₈	7 ³ / ₄	8 ³ / ₄	7 ⁷ / ₈	9 ³ / ₈	10 ⁷ / ₈	10 ¹ / ₄	19 ¹ / ₈	26 ³ / ₄	21	15 ³ / ₄	22 ¹ / ₈	5 ⁸ / ₈
241	11 ¹ / ₂	10 ³ / ₈	11 ⁵ / ₈	10 ¹ / ₂	12 ¹ / ₄	14 ³ / ₈	13 ¹ / ₂	25	34 ¹ / ₄	27 ⁵ / ₈	20 ³ / ₈	26 ³ / ₈	3 ⁴ / ₄
301	13 ⁵ / ₈	12 ¹ / ₄	13 ³ / ₄	12 ³ / ₈	14 ⁷ / ₈	16 ⁷ / ₈	16 ¹ / ₈	30 ¹ / ₄	40 ⁷ / ₈	33 ¹ / ₄	24 ⁵ / ₈	29 ⁵ / ₈	3 ⁴ / ₄

† For Arrangements 9 and 9-E fans only. BL = slide base (AL + BT) / 2 + motor AB.

Tolerance: ± 1/8"

ARRANGEMENTS 1, 8, 9 FANS

Size	H		NN		O		S	Max. motor limitation*	
	MP	HP	MP	HP	MP	HP		C-NW	Frame
151	34 ⁷ / ₈	NA	22 ³ / ₄	NA	31 ⁵ / ₈	NA	13 ³ / ₄	15 ¹ / ₂	184T
181	38 ³ / ₈	36 ⁵ / ₈	24	23 ¹ / ₈	34 ¹ / ₈	32 ³ / ₈	13 ³ / ₄	15 ¹ / ₂	184T
241	46	43 ³ / ₄	28 ⁷ / ₈	27 ³ / ₄	42 ¹ / ₄	40	15 ¹ / ₄	18	215T
301	55 ³ / ₄	53	35	33 ⁵ / ₈	50 ¹ / ₂	47 ³ / ₄	19 ¹ / ₄	22	256T

* For Arrangement 9 fans only. C-NW is maximum motor case length [NEMA C minus NEMA NW].

Tolerance: ± 1/8"

ARRANGEMENT 8 FANS

Size	Motor frame	XX		SS
		MP	HP	
121	143T-145T 182T-184T	35 ¹ / ₄	NA	13 ¹ / ₂ 15
		36 ³ / ₄	NA	
151	143T-145T 182T-184T	36 ³ / ₄	NA	14 15 ¹ / ₂
		38 ¹ / ₄	NA	
181	143T-145T 182T-184T 213T-215T 254T-256T	39	38 ¹ / ₈	15 16 ¹ / ₂ 19 ³ / ₈ 23 ³ / ₄
		40 ¹ / ₂	39 ⁵ / ₈	
		43 ³ / ₈	42 ¹ / ₂	
		47 ³ / ₄	46 ⁷ / ₈	
241	182T-184T 213T-215T 254T-256T 284TS-286TS 324TS-326TS	46 ³ / ₈	45 ¹ / ₄	17 ¹ / ₂ 20 ³ / ₈ 24 ³ / ₄ 26 ¹ / ₂ 28 ¹ / ₂
		49 ¹ / ₄	48 ¹ / ₈	
		53 ⁵ / ₈	52 ¹ / ₂	
		55 ³ / ₈	54 ¹ / ₄	
		57 ³ / ₈	56 ¹ / ₄	
301	213T-215T 254T-256T 284TS-286TS 324TS-326TS	56 ³ / ₈	55	21 ³ / ₈ 25 ³ / ₄ 27 ¹ / ₂ 29 ¹ / ₂
		60 ³ / ₄	59 ³ / ₈	
		62 ¹ / ₂	61 ¹ / ₈	
		64 ¹ / ₂	63 ¹ / ₈	

Tolerance: ± 1/8"

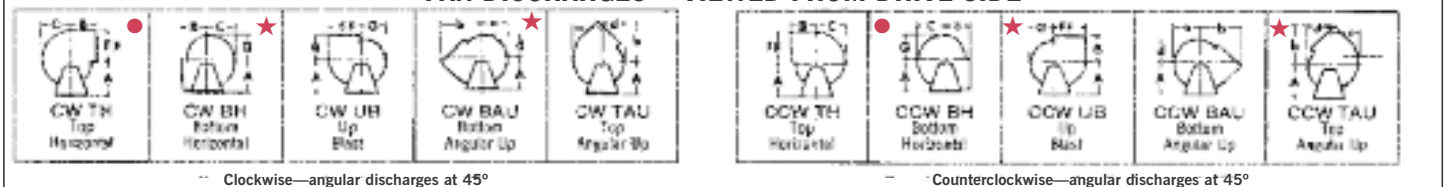
ARRANGEMENT 9-E FANS

Size	H		NN		O		S	Max. motor limitation		
	MP	HP	MP	HP	MP	HP		C-NW	Frame	
										181
241	52 ¹ / ₂	50 ¹ / ₄	35 ³ / ₈	34 ¹ / ₄	48 ³ / ₄	46 ¹ / ₂	21 ³ / ₄	24 ¹ / ₂	27	286T
301	60 ³ / ₄	58	40	38 ⁵ / ₈	55 ¹ / ₂	52 ³ / ₄	24 ¹ / ₄	27	326T	

C-NW is maximum motor case length [NEMA C minus NEMA NW].

Tolerance: ± 1/8"

FAN DISCHARGES – VIEWED FROM DRIVE SIDE



-- Clockwise—angular discharges at 45°

-- Counterclockwise—angular discharges at 45°

● If inlet box is furnished on Sizes 361 to 601 in Top Horizontal fan position, inlet box may extend below floor line.

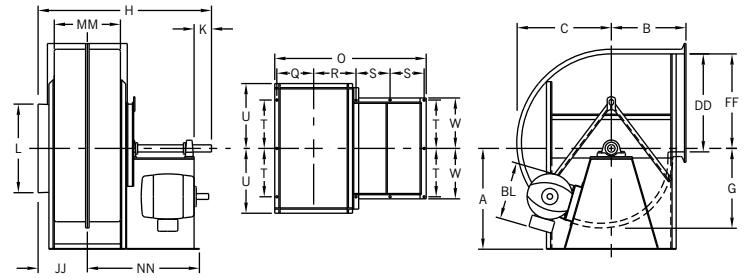
★ Arrangement 10 fans with Bottom Horizontal or Bottom Angular Up discharges are equipped with a 3-inch channel sub-base...add 3" to the fan centerline height.

ARRANGEMENTS 1, 9, 9-E, 9-F FANS

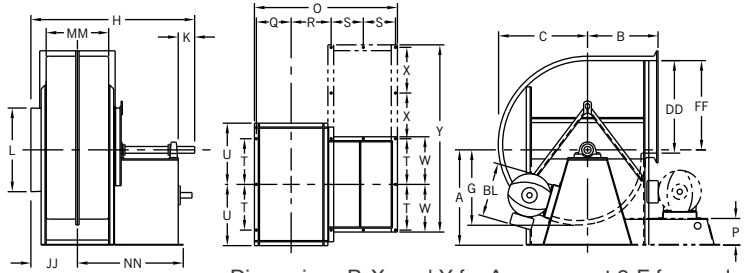
L is OD of collar. DD, FF, and MM are inside dimensions. JJ is from centerline over inlet collar.
Dimensions not to be used for construction unless certified.

DIMENSIONS [INCHES] SIZES 361-601 NON-ROTATABLE HOUSINGS

ARRANGEMENTS 1, 9 FANS



ARRANGEMENTS 9-E, 9-F FANS



Dimensions P, X, and Y for Arrangement 9-F fans only.

ARRANGEMENTS 1, 9 FANS

Size	H		NN		O		S	Max. motor limitation*	
	MP	HP	MP	HP	MP	HP		C-NW	Frame
361	68 ¹ / ₄	65 ¹ / ₈	46 ¹ / ₈	44 ⁵ / ₈	63	59 ⁷ / ₈	13	22	256T
421	72 ³ / ₈	68 ³ / ₄	48 ¹ / ₄	46 ³ / ₈	67 ¹ / ₈	63 ¹ / ₂	13	22	256T
481	77	72 ⁷ / ₈	50 ¹ / ₂	48 ¹ / ₂	71 ³ / ₄	67 ⁵ / ₈	13	22	256T
541	91 ¹ / ₄	86 ¹ / ₂	60 ⁷ / ₈	58 ¹ / ₂	85 ¹ / ₂	80 ³ / ₄	16	27	326T
601	95 ⁵ / ₈	90 ¹ / ₂	63 ³ / ₈	60 ¹ / ₂	89 ⁷ / ₈	84 ³ / ₄	16	27	326T

* For Arrangement 9 fans only.
C-NW is maximum motor case length [NEMA C minus NEMA NW].
Tolerance: ± 1/32"

ARRANGEMENTS 1, 9, 9-E, 9-F FANS

Size	A			B	C		DD	FF	G		JJ		K	L	MM	
	TH	BH, BAU	UB, TAU		MP	HP			MP	HP	MP	HP			MP	HP
361	34	44 ¹ / ₂	40	29	39 ¹ / ₄	37 ⁵ / ₈	41 ¹ / ₂	39 ¹ / ₈	33 ¹ / ₄	31 ⁵ / ₈	19 ³ / ₈	17 ³ / ₄	5 ¹ / ₂	38 ⁵ / ₈	27 ¹ / ₄	24 ¹ / ₈
421	39	51	46	32 ¹ / ₂	44 ⁷ / ₈	43 ¹ / ₄	47 ³ / ₄	44 ⁷ / ₈	38	36 ³ / ₈	21 ³ / ₈	19 ⁵ / ₈	5 ¹ / ₂	44 ³ / ₄	31 ³ / ₈	27 ³ / ₄
481	44	57 ¹ / ₂	52	36 ¹ / ₂	51	49 ³ / ₈	54 ¹ / ₂	51 ³ / ₈	43 ¹ / ₈	41 ¹ / ₂	23 ³ / ₄	21 ⁵ / ₈	5 ¹ / ₂	50 ³ / ₄	35 ⁷ / ₈	31 ³ / ₄
541	49 ¹ / ₂	65	59	42 ¹ / ₂	57 ⁵ / ₈	55 ⁷ / ₈	61 ⁵ / ₈	58 ¹ / ₈	48 ³ / ₄	46 ⁷ / ₈	27 ¹ / ₈	24 ³ / ₄	7	57	40 ¹ / ₂	35 ³ / ₄
601	54 ¹ / ₂	71 ¹ / ₂	64 ¹ / ₂	46	63 ¹ / ₂	61 ³ / ₄	68 ¹ / ₈	64 ¹ / ₄	53 ⁵ / ₈	51 ⁷ / ₈	29 ³ / ₈	26 ³ / ₄	7	63	44 ⁷ / ₈	39 ³ / ₄

Size	Q		R		T	U	W	a	b	c	d	BL†	Base hole Dia.
	MP	HP	MP	HP									
361	15 ⁵ / ₈	14	18 ⁵ / ₈	17 ¹ / ₈	17 ¹ / ₂	25	19	36 ³ / ₄	49 ³ / ₄	40 ⁵ / ₈	29 ⁷ / ₈	23 ¹ / ₂	7/8
421	17 ⁵ / ₈	15 ⁷ / ₈	20 ³ / ₄	18 ⁷ / ₈	20	28 ¹ / ₈	21 ¹ / ₂	41 ⁷ / ₈	57	46 ¹ / ₄	34	30 ¹ / ₄	7/8
481	20	17 ⁷ / ₈	23	21	23	31 ³ / ₈	24 ¹ / ₂	47 ¹ / ₂	64 ¹ / ₂	56 ³ / ₄	38 ⁵ / ₈	31 ¹ / ₄	7/8
541	22 ⁷ / ₈	20 ¹ / ₂	26 ⁷ / ₈	24 ¹ / ₂	25	35 ⁷ / ₈	26 ¹ / ₂	53 ⁷ / ₈	73 ³ / ₈	59 ¹ / ₂	43 ⁵ / ₈	35 ¹ / ₄	1
601	25	22 ¹ / ₂	29 ¹ / ₈	26 ¹ / ₂	26 ¹ / ₂	39	28 ¹ / ₂	59	80 ³ / ₈	62 ³ / ₈	45 ³ / ₄	39 ¹ / ₄	1

† For Arrangements 9 and 9-E fans only. BL = slide base (AL + BT) / 2 + motor AB. Tolerance: ± 1/32"

ARRANGEMENTS 9-E, 9-F FANS

Size	H		NN		O		S	Arrangement 9-F fans only			Maximum motor limitations			
	MP	HP	MP	HP	MP	HP		P	X	Y	Arrangement 9-E		Arrangement 9-F	
											C-NW	Motor frame	C-NW	Motor frame
361	72 ¹ / ₄	69 ¹ / ₈	50 ¹ / ₈	48 ⁵ / ₈	67	63 ⁷ / ₈	15	12	19	76	26	326T	29	365T
421	76 ³ / ₈	72 ³ / ₄	52 ¹ / ₄	50 ³ / ₈	71 ¹ / ₈	67 ¹ / ₂	15	15	19	81	26	326T	29	365T
481	81	76 ⁷ / ₈	54 ¹ / ₂	52 ¹ / ₂	75 ³ / ₄	71 ⁵ / ₈	15	15	21	91	26	326T	29	365T
541	95 ¹ / ₄	90 ¹ / ₂	64 ⁷ / ₈	62 ¹ / ₂	89 ¹ / ₂	84 ³ / ₄	18	18	25	104	31	365T	35	405T
601	99 ⁵ / ₈	94 ¹ / ₂	67 ¹ / ₈	64 ¹ / ₂	93 ⁷ / ₈	88 ³ / ₄	18	18	25	107	31	365T	35	405T

NOTE: Sizes 361-601 Arrangement 8 pedestal dimensions are dependent on motor size. Tolerance: ± 1/32"

The New York Blower Company has a policy of continuous product development and reserves the right to change designs and specifications without notice.