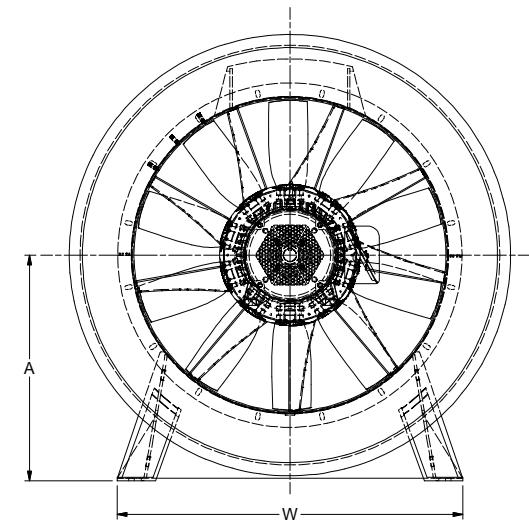
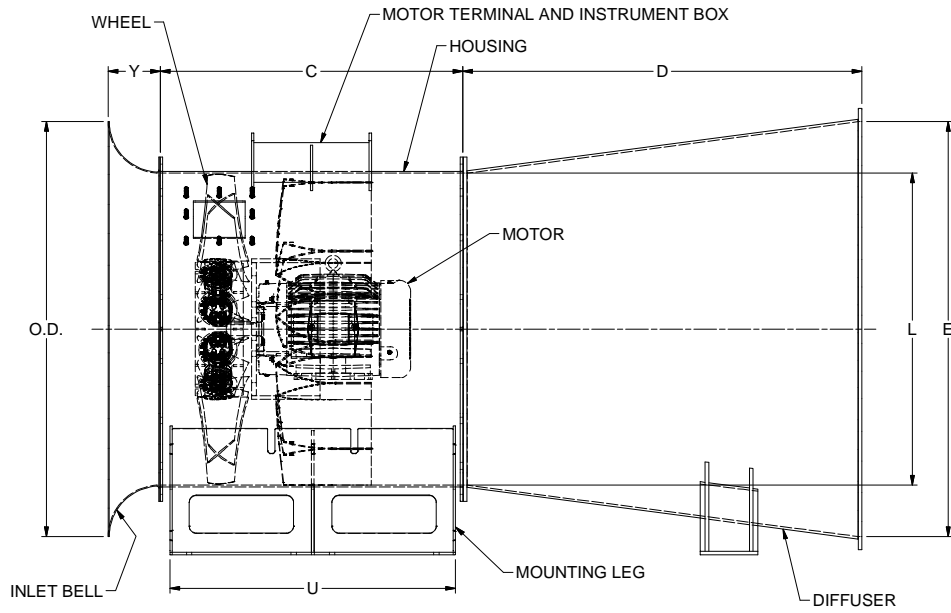


VXAP SIZE 32 TO 60. 0.45 HUB RATIO, ARRANGEMENT 4 WITH DIFFUSER

SB-114  
07.20.250.R0



UNITS IN inches [mm]

SIZE		MOTOR FRAME SIZE	O.D.	Y	C	D	L	E	A	U	W	WEIGHT (FAN NOT INCLUDING MOTOR) lbs (kgs)
FULL SOLIDITY	HALF SOLIDITY											
32-14-10	32-14-05	213TC/215TC	43 [1092]	5 1/2 [140]	31 1/2 [800]	41 1/2 [1054]	32 1/2 [826]	43 [1092]	23 1/2 [597]	27 1/2 [699]	36 [914]	1011 [458]
36-16-10	16-16-05	213TC/215TC	48 1/2 [1232]	6 [152]	31 7/8 [810]	46 1/2 [1181]	36 1/2 [927]	48 1/2 [1232]	26 [660]	27 7/8 [708]	41 [1041]	1336 [606]
		254TC/256TC			36 3/4 [933]					32 3/4 [832]		
		213TC/215TC			32 3/8 [822]					28 3/8 [721]		
38-18-10	38-10-05	254TC/256TC	50 1/2 [1283]	6 1/2 [165]	37 1/4 [946]	48 [1219]	38 [965]	50 1/2 [1283]	27 1/2 [698]	33 1/4 [845]	42 1/2 [1080]	1599 [708]
		284TC/286TC			39 1/2 [1003]					35 1/2 [902]		
		213TC/215TC			33 1/4 [841]					29 1/4 [743]		
42-19-10	21-19-05	254TC/256TC	57 [1448]	7 [178]	38 1/8 [968]	54 1/4 [1378]	42 3/4 [1086]	57 [1448]	30 [762]	34 1/8 [867]	47 1/2 [1207]	1952 [886]
		284TC/286TC			40 5/8 [1032]					36 5/8 [930]		
		324TC/326TC			43 1/8 [1095]					39 1/8 [994]		
		213TC/215TC			34 [864]					30 [762]		
48-21-10	48-21-05	254TC/256TC	65 [1651]	8 [203]	38 7/8 [987]	61 3/4 [1568]	48 3/4 [1238]	65 [1651]	33 1/2 [851]	34 7/8 [883]	53 1/2 [1359]	2486 [1127]
		284TC/286TC			41 1/8 [1045]					37 1/8 [943]		
		324TC/326TC			44 [1118]					40 [1016]		
		364TC/365TC			46 3/4 [1187]					42 3/4 [1086]		
54-24-10	54-24-05	284TC/286TC	73 [1854]	9 [229]	41 3/4 [1060]	69 1/2 [1753]	55 [1397]	73 [1854]	37 1/2 [953]	37 3/4 [959]	60 [1524]	3119 [1415]
		324TC/326TC			44 3/8 [1127]					40 3/8 [1026]		
		364TC/365TC			47 3/8 [1203]					43 3/8 [1102]		
		404TC/405TC			51 1/8 [1299]					47 1/8 [1197]		
60-27-10	60-27-05	324TC/326TC	81 [2057]	10 [254]	45 1/2 [1156]	77 [1956]	61 [1549]	81 [2057]	41 1/2 [1054]	41 1/2 [1058]	66 [1674]	3996 [1813]
		364TC/365TC			48 1/4 [1226]					44 1/4 [1124]		
		404TC/405TC			52 1/8 [1324]					48 1/8 [1222]		
		444TC/445TC			56 3/8 [1432]					52 3/8 [1330]		
		447TC/449TC			67 1/2 [1715]					63 1/2 [1613]		

- GENERAL NOTES:  
 1. UNLESS OTHERWISE SPECIFIED ALL DIMENSIONS ARE IN INCHES.  
 2. ALL FORMS ARE UP, UNLESS OTHERWISE SPECIFIED.  
 3. DIMENSIONS IN ( ) ARE FOR REFERENCE ONLY.

NOTICE: This drawing is the property of THE NEW YORK BLOWER CO. and is loaned subject to the condition that it shall not be reproduced, copied, loaned or submitted to outside parties without our consent.



**THE NEW YORK  
BLOWER COMPANY**

DESCRIPTION: VXAP SIZE 32 TO 60, 0.45 HUB RATIO, ARR 4 WITH DIFFUSER  
 CUSTOMER:  
 FILE NUMBER:  
 SEQUENCE:  
 DRAWN BY: LW  
 DRAWN DATE: 4/6/2020  
 ENGINEER:  
 SCALE:

THE NEW YORK BLOWER COMPANY  
 1769 Quincy Street  
 Willowbrook, IL 60527-5530  
 Visit us on the Web: <http://www.nyb.com>  
 Phone: (800) 208-7918 Email: [nyb@nyb.com](mailto:nyb@nyb.com)  
 DWG: \_\_\_\_\_  
 SIZE: \_\_\_\_\_  
 MAT'L: \_\_\_\_\_  
 TOL: ± 1/8 WEIGHT: 1117.6 lbmass  
 PART NUMBER: SB-114  
 REV: -