

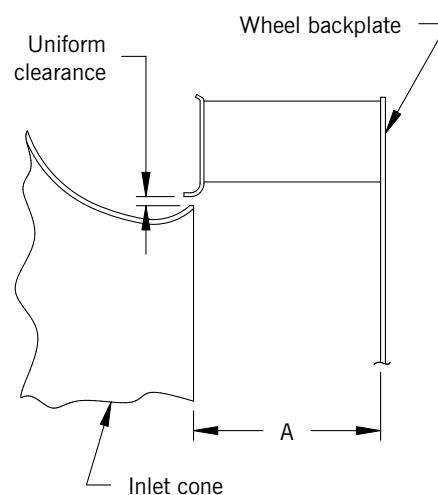
MODEL 60 ECF-9						REGION A		REGION B		REGION C		REGION D		REGION E								
						1"SP		2"SP		3"SP		4"SP		6"SP		7"SP		8"SP		9"SP		10"SP
CFM	RPM	BHP	RPM	BHP	RPM	BHP	RPM	BHP	RPM	BHP	RPM	BHP	RPM	BHP	RPM	BHP	RPM	BHP	RPM	BHP	RPM	BHP
25000	331	5.64	434	11.7	531	19.1	614	27.5	743	45.4	801	55.5	854	66.0	903	76.7	953	88.7	995	99.5	1040	112
33500	376	7.97	460	15.1	536	23.0	615	32.2	751	52.5	812	64.1	865	75.5	914	87.1	961	99.6	1006	113	1048	125
42000	427	11.0	502	19.4	566	28.3	629	38.0	752	59.9	811	71.9	867	84.4	921	98.1	972	112	1017	126	1060	140
50500	477	14.6	550	24.6	610	34.9	665	45.7	767	68.6	816	80.8	869	94.6	922	109	972	124	1018	139	1063	154
59000	531	19.3	601	30.7	657	42.2	708	54.5	799	79.5	845	93.1	886	106	931	121	974	136	1017	151	1064	169
67500	588	25.1	651	37.8	708	51.1	755	64.3	842	92.3	882	107	921	121	960	137	999	153	1034	168		
76000	646	32.2	703	46.1	758	60.8	805	75.7	888	107	925	122	962	138	997	154	1034	172	1067	188		
84500	706	40.7	758	55.8	809	72.1	855	88.1	935	122	971	139	1008	157	1041	174						
93000	767	50.8	815	67.4	862	84.9	907	103	985	139	1021	158	1055	177								
101500	829	62.7	872	80.4	916	99.2	958	118	1035	157												
110000	892	76.4	931	95.4	972	115	1011	136														

INSTALLATION

WHEEL-INLET CONE CLEARANCES

For optimum Plug Fan performance the wheel-to-inlet cone positioning must be uniform around the wheel inlet and conform to the dimensions listed here. Use of the integral inlet cone assembly as described on pages 5 and 20 will ensure that this spacing is maintained.

DIMENSIONS [INCHES]		
Size	A	
	AcF/PLR	ECF-9
12	4 1/2	NA
15	5 1/2	NA
18	7	7 7/16
20	7 7/16	8 1/8
22	8 1/4	9
24	9 5/16	9 15/16
27	10 3/16	10 7/8
30	11 1/4	12
33	12 1/4	13 3/16
36	13 3/8	14 1/4
40	14 13/16	15 13/16
44	16 1/4	17 3/8
49	17 15/16	19 3/16
54	19 13/16	21 1/8
60	21 13/16	23 7/16

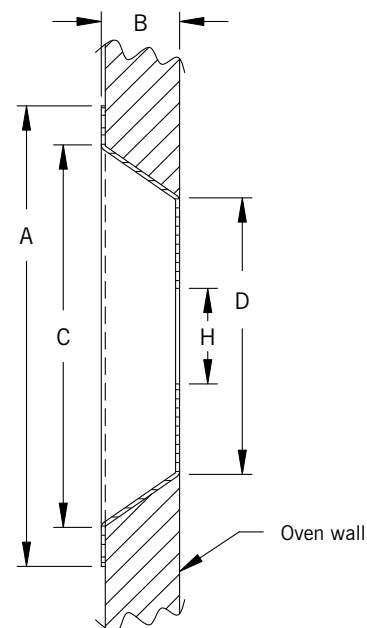


SHAFT-SEAL CONE

800°F. Plug Fans* are available without insulation panels but in all cases are furnished with recessed shaft-seal cone assemblies. In order to operate correctly, the shaft-seal operates in a recessed cone. Customer's oven wall must provide sufficient space for insertion of the recessed cone. The assembly is an integral part of Plug Fans furnished with insulated panels.

*Option for Sizes 44 and 49 450°F.

DIMENSIONS [INCHES]						
Size	Shaft Seal Size	A	B	C	D	H
18-40	All	18 3/4	3 1/8	15 1/4	11	3 3/4
44-49	All	12 1/4	5/8	10 1/4	9	4
54,60	2 15/16	16 5/8	1 3/4	14 1/4	11	3 1/2
	3 7/16					4
	3 15/16					4 1/2
	4 7/16					5



MATERIAL SPECIFICATIONS [POUNDS, WR² IN LB.-FT.²]

WHEEL WEIGHTS												
Size	Acoustafoil					PLR			ECF-9			
	Class 2		Class 3		Class 4	Class 2	Class 3	Class 4	Class 2	Class 3	Class 3	Class 3
	Carbon Steel	SST	Carbon Steel	SST	Carbon Steel				Carbon Steel	SST	Carbon Steel	SST
12	7	NA	NA	NA	NA	15	NA	NA	NA	NA	NA	NA
15	12	NA	NA	NA	NA	21	NA	NA	NA	NA	NA	NA
18	31	47	44	50	49	32	43	48	32	47	44	46
20	47	57	56	64	61	50	58	61	37	55	49	54
22	54	64	63	74	73	59	63	67	54	70	57	69
24	71	101	95	101	100	74	87	100	70	97	79	98
27	91	116	114	116	115	91	103	117	82	114	91	115
30	103	153	142	153	151	115	127	152	98	139	121	140
33	117	175	157	182	180	137	147	173	115	161	140	162
36	174	263	251	271	268	206	268	261	178	240	256	241
40	194	305	304	313	310	214	325	339	188	294	310	295
44	252	391	349	414	410	289	372	438	258	358	356	359
49	347	621	551	638	631	377	589	661	347	563	556	564
54	415	691	727	745	788	517	825	824	416	759	698	760
60	529	897	877	906	916	647	978	953	538	911	851	912

WHEEL WR ²												
Size	Acoustafoil					PLR			ECF-9			
	Class 2		Class 3		Class 4	Class 2	Class 3	Class 4	Class 2	Class 3	Class 3	Class 3
	Carbon Steel	SST	Carbon Steel	SST	Carbon Steel				Carbon Steel	SST	Carbon Steel	SST
12	1	NA	NA	NA	NA	2	NA	NA	NA	NA	NA	NA
15	3	NA	NA	NA	NA	4	NA	NA	NA	NA	NA	NA
18	10	13	12	14	14	10	11	12	10	14	12	16
20	17	21	21	26	26	19	24	27	15	20	17	22
22	22	29	26	36	36	26	28	32	23	33	25	35
24	38	55	43	55	54	43	46	53	38	53	42	55
27	63	79	65	79	78	64	69	78	56	98	59	100
30	91	121	115	121	120	104	110	120	86	122	104	124
33	121	174	154	187	185	146	155	170	117	175	149	177
36	232	304	259	319	316	278	275	298	233	298	262	300
40	306	446	407	508	503	355	461	514	308	457	412	459
44	501	755	597	823	814	568	628	860	504	703	604	705
49	833	1251	976	1321	1307	903	1059	1362	842	1165	990	1167
54	1240	1777	1782	2003	2125	1608	2138	2200	1252	2036	1781	2038
60	1910	2972	2777	3121	3103	2433	3238	3205	1930	3148	2790	3150

COMBUSTION AIR CHOICES

Sizes 12 and 15 General Purpose Fans with aluminum Acoustafoil wheels have a maximum operating temperature of 200°F. Sizes 18 through 36 General Purpose Fans with Acoustafoil wheels and all General Purpose Fans with BC and PLR wheels can be modified to handle airstream temperatures to 650°F. . . . air temperature surrounding the bearings must not exceed 120°F. or the motor's rated ambient temperature.

Heat-fan construction includes a shaft cooler with guards, an insulating motor heat shield, and an industrial-grade coating capable of withstanding temperatures from 201°F. to 650°F.



MATERIAL SPECIFICATIONS [INCHES, POUNDS, WR² IN LB.-FT.²]

CLASS 2 PLUG FANS														
Size	Motor Frame Size	Bare Fan Weight (Less Motor and Shaft)						B†	Shaft diameter					
		200°F./450°F.	800°F. Uninsulated (4")	800°F. Uninsulated (6")	800°F. Insulated (4")	800°F. Insulated (6")	800°F./1000°F. Insulated (8")		200°F./450°F.		800°F.		1000°F.	
									at wheel	at bearings	at wheel	at bearings	at wheel & at bearings	
12	All	127	144	146	167	--	--	A	1 ⁷ / ₁₆	1 ⁷ / ₁₆	1 ¹⁵ / ₁₆	1 ¹⁵ / ₁₆	—	
15		127	144	146	167	--	--	A	1 ¹¹ / ₁₆	1 ¹¹ / ₁₆	1 ¹⁵ / ₁₆	1 ¹⁵ / ₁₆	—	
18		202	223	225	260	277	279	A	1 ¹⁵ / ₁₆	1 ¹⁵ / ₁₆	1 ¹⁵ / ₁₆	2 ³ / ₁₆	2 ³ / ₁₆	
20		206	241	244	278	286	289	A	1 ¹⁵ / ₁₆	1 ¹⁵ / ₁₆	1 ¹⁵ / ₁₆	2 ⁷ / ₁₆	2 ⁷ / ₁₆	
22		206	241	244	278	286	289	A	1 ¹⁵ / ₁₆	1 ¹⁵ / ₁₆	2 ⁷ / ₁₆	2 ⁷ / ₁₆	2 ⁷ / ₁₆	
24		315	342	345	392	415	418	B	2 ³ / ₁₆	2 ³ / ₁₆	2 ⁷ / ₁₆	2 ⁷ / ₁₆	2 ⁷ / ₁₆	
27		315	342	345	392	415	418	B	2 ³ / ₁₆	2 ³ / ₁₆	2 ⁷ / ₁₆	2 ⁷ / ₁₆	2 ⁷ / ₁₆	
30		390	426	429	493	523	526	B	2 ³ / ₁₆	2 ³ / ₁₆	2 ⁷ / ₁₆	2 ⁷ / ₁₆	2 ⁷ / ₁₆	
33		390	426	429	493	523	526	B	2 ³ / ₁₆	2 ³ / ₁₆	2 ³ / ₁₆	2 ⁷ / ₁₆	2 ⁷ / ₁₆	
36		482	513	516	604	867	870	B	2 ³ / ₁₆	2 ³ / ₁₆	2 ³ / ₁₆	2 ¹¹ / ₁₆	2 ¹¹ / ₁₆	
40		482	513	516	604	867	870	B	2 ⁷ / ₁₆	2 ⁷ / ₁₆	2 ⁷ / ₁₆	2 ¹¹ / ₁₆	2 ¹¹ / ₁₆	
44		993	1073	1078	1133	1223	1228	D	2 ¹¹ / ₁₆	3 ⁷ / ₁₆	2 ¹¹ / ₁₆	3 ⁷ / ₁₆	3 ⁷ / ₁₆	
49		993	1073	1078	1133	1223	1228	D	2 ¹⁵ / ₁₆	3 ⁷ / ₁₆	2 ¹⁵ / ₁₆	3 ⁷ / ₁₆	3 ⁷ / ₁₆	
54		405T	1660	1730	1740	1830	1860	1890	D	2 ¹⁵ / ₁₆	2 ¹⁵ / ₁₆	3 ⁷ / ₁₆	3 ⁷ / ₁₆	3 ⁷ / ₁₆
54		444T/445T	1830	1910	1910	2010	2040	2060	D	2 ¹⁵ / ₁₆	2 ¹⁵ / ₁₆	3 ⁷ / ₁₆	3 ⁷ / ₁₆	3 ⁷ / ₁₆
60		405T	1840	1910	1910	2030	2060	2100	D	2 ¹⁵ / ₁₆	2 ¹⁵ / ₁₆	3 ⁷ / ₁₆	3 ⁷ / ₁₆	3 ⁷ / ₁₆
60	444T/445T	2020	2090	2100	2210	2250	2290	D	2 ¹⁵ / ₁₆	2 ¹⁵ / ₁₆	3 ⁷ / ₁₆	3 ⁷ / ₁₆	3 ⁷ / ₁₆	

Bearing Type: A- Standard Duty Ball, Concentric Lock B- Medium Duty Ball, Concentric Lock D-Spherical Roller, 2 Bolt

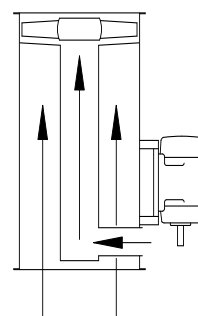
CLASS 3 PLUG FANS													
Size	Motor Frame Size	Bare Fan Weight (Less Motor and Shaft)						Bearing Type†			Shaft diameter		
		200°F./450°F.	800°F. Uninsulated (4")	800°F. Uninsulated (6")	800°F. Insulated (4")	800°F./1000°F./1300°F. Insulated (8")	800°F./1000°F. Insulated (8")	200°F./450°F.	800°F./1000°F.	1300°F.*	200°F./450°F.	800°F./1000°F./1300°F.	
											at wheel & at bearings	at wheel & at bearings	
18	All	262	286	288	323	356	359	A	A	C	2 ³ / ₁₆	2 ⁷ / ₁₆	
20		262	286	288	323	356	359	A	A	C	2 ³ / ₁₆	2 ⁷ / ₁₆	
22		268	329	332	366	428	431	A	B	C	2 ⁷ / ₁₆	2 ¹¹ / ₁₆	
24		420	454	457	503	537	540	B	B	C	2 ⁷ / ₁₆	2 ¹¹ / ₁₆	
27		420	454	457	503	537	540	B	B	C	2 ⁷ / ₁₆	2 ¹¹ / ₁₆	
30		589	622	625	708	808	812	C	C	C	2 ¹¹ / ₁₆	2 ¹⁵ / ₁₆	
33		589	622	625	708	808	812	C	C	C	2 ¹¹ / ₁₆	2 ¹⁵ / ₁₆	
36		650	680	683	771	817	821	C	C	C	2 ¹¹ / ₁₆	2 ¹⁵ / ₁₆	
40		650	680	683	771	817	821	C	C	C	2 ¹¹ / ₁₆	2 ¹⁵ / ₁₆	
44		968	1013	1018	1053	1128	1133	D	D	D	3 ⁷ / ₁₆	3 ⁷ / ₁₆	
49		968	1013	1018	1053	1128	1133	D	D	D	3 ⁷ / ₁₆	3 ⁷ / ₁₆	
54		405T	1730	1810	1810	1910	1940	1970	D	D	D	3 ⁷ / ₁₆	3 ¹⁵ / ₁₆
54		444T/445T	1910	1990	2000	2090	2120	2150	D	D	D	3 ⁷ / ₁₆	3 ¹⁵ / ₁₆
54		447T	2040	2250	2250	2350	2380	2410	D	E	E	3 ⁷ / ₁₆	4 ⁷ / ₁₆
60		405T	1910	2100	2110	2220	2260	2300	D	E	E	3 ⁷ / ₁₆	4 ⁷ / ₁₆
60		444T/445T	2090	2300	2310	2420	2460	2500	D	E	E	3 ⁷ / ₁₆	4 ⁷ / ₁₆
60	447T/449T	2470	2600	2610	2720	2760	2800	D	E	E	3 ¹⁵ / ₁₆	4 ⁷ / ₁₆	

Bearing Type: A- Standard Duty Ball, Concentric Lock B- Medium Duty Ball, Concentric Lock C-Heavy Duty Ball, Concentric Lock D-Spherical Roller, 2 Bolt E- Spherical Roller, 4 Bolt

EXHAUST FAN CHOICES

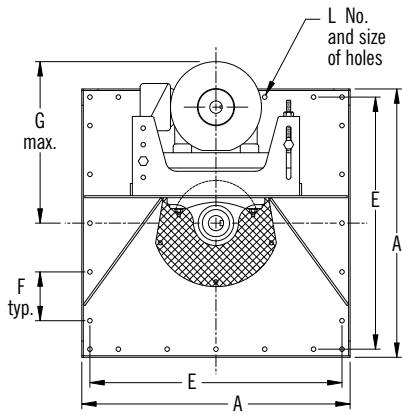
New York Blower Duct Fans, with heat-fan construction, are ideal for industrial oven and dryer exhaust systems where pressure requirements are minimal and compact, light-weight designs are advantageous. With heat-fan construction, Duct Fans are capable of handling airstream temperatures to 350°F in ambient environments up to 120°F.

For higher temperature applications, the Duct Fan, with heat-fan construction, induces a flow of cooler, ambient air through the belt well and inner tube, cooling the fan's internal components. Depending on temperature requirements, modifications include high-temperature fan wheel, special drive components, and modifications to provide internal ambient air cooling.

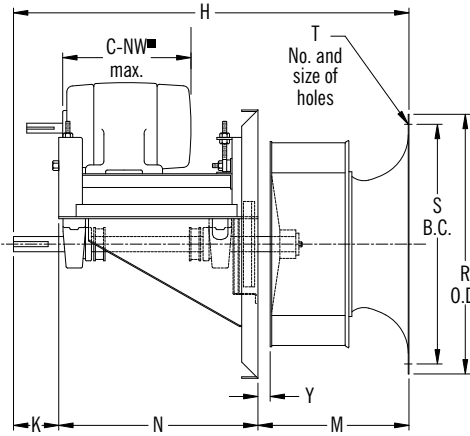


■ Plug Fan motors are mounted as space permits as measured by dimension C-NW. To determine fit, compare the desired motor's frame size with the frame size listed below. If the frame size and C-NW dimension are no larger than that shown, the combination is satisfactory. If the C-NW dimension is larger than that shown, a different motor or fan must be selected.

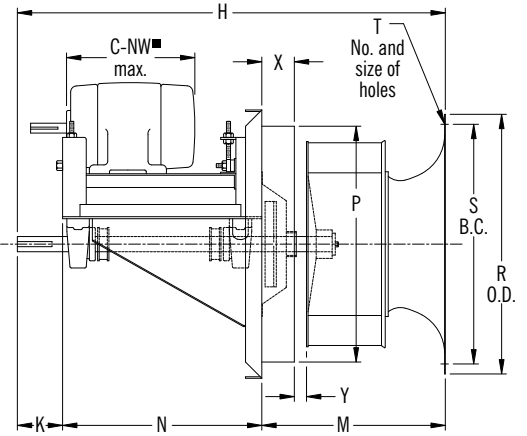
CLASS 2 SIZES 12-40



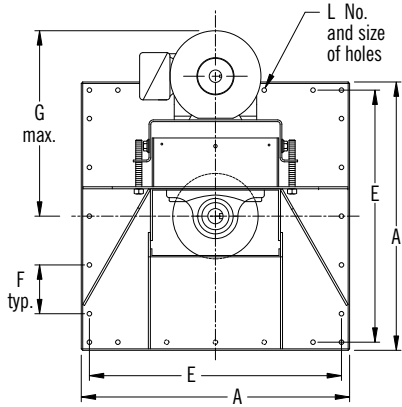
200°F./450°F.



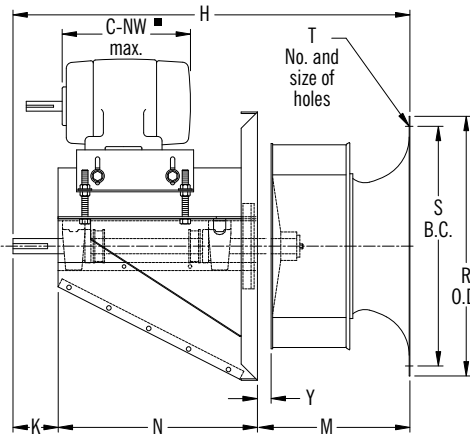
800°F.-1000°F.



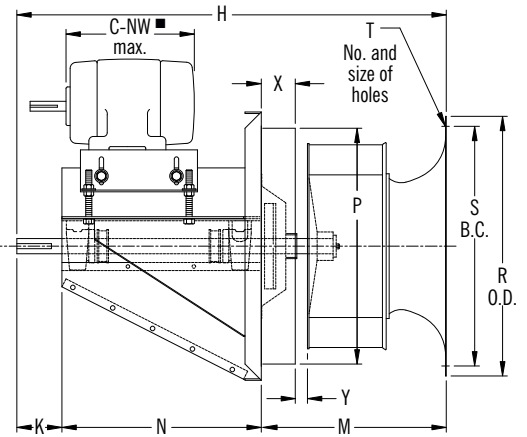
CLASS 3 SIZES 18-40



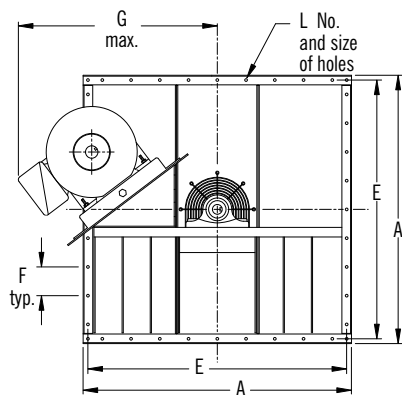
200°F./450°F.



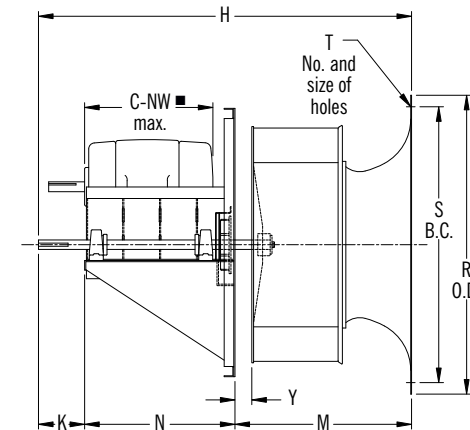
800°F.-1000°F.-1300°F.



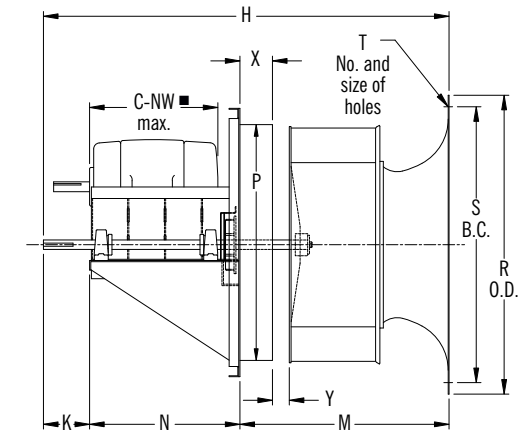
CLASS 2*/3 SIZES 44-60



200°F./450°F.



800°F.-1000°F.-1300°F.



*Class 2 Sizes 44-60 Plug Fans are only available to 1000°F.
 Y = 1½" on sizes 12-49. Y = 2½" on sizes 54-60. X = 4" or 6" on 800°F. fans, 6" or 8" on 1000°F./1300°F. fans.
 Dimensions not to be used for construction unless certified.
 L = All holes 9/16" diameter and on centerline. Sizes 12-27, 24 holes; Sizes 30-40, 32 holes; Sizes 44-54, 40 holes. Size 60, 48 holes.

The New York Blower Company has a policy of continual product improvement and reserves the right to change designs and specifications without notice.

DIMENSIONS AND SPECIFICATIONS [INCHES, POUNDS, WR² IN LB.-FT.²]

DIMENSIONS [INCHES]—for drawings on page 24																									
Size	Wheel dia.*	A	E	F	G max.		H (AcF, PLR Wheels)				K	M (AcF, PLR Wheels)				N	P†	R	S	T	Wheel cone clear.	Class 2		Class 3	
					Class		200°F./450°F.	800°F.	1000°F./1300°F.			200°F./450°F.	800°F.	800°F.±, 1000°F./1300°F.								C-NW max.	Max. motor frame	C-NW max.	Max. motor frame
					2	3	6" panel	8" panel	4" panel	6" panel		8" panel													
12	12¼	21	19	4	18	—	34¼	38¼	—	—	3	10	14	—	—	21¼	17	15¾	14½	8-11/16	4½	17	215T	—	—
15	15	21	19	4	18	—	35¾	39¾	—	—	3	11½	15½	—	—	21¼	17	18½	17½	8-11/16	5½	17	215T	—	—
18	18¼	28	26	6	26¾	25¼	42½	46½	48½	50½	4	14	18	20	22	24½	24	22¾	21¾	16-7/8	7	22¾	284T	22¾	284T
20	20½	28	26	6	26¾	26	43¼	47¼	49¼	51¼	4	15½	19½	21½	23½	24½	24	24½	23½	16-7/8	7½	22¾	284T	22¾	284T
22	22¼	28	26	6	26¾	26	44¾	48¾	50¾	52¾	4	16½	20½	22½	24½	24½	24	27½	26½	16-7/8	8¼	22¾	284T	22¾	284T
24	24½	33	31	6	29¼	27½	50	54	56	58	5	18¼	22¼	24¼	26¼	26¾	29	30½	29½	16-1	9¼	25¼	324T	25¼	324T
27	27	33	31	6	29¼	28¼	51½	55½	57½	59½	5	19¾	23¾	25¾	27¾	26¾	29	33½	31¾	16-1	10½	25¼	324T	25¼	324T
30	30	39	37	5½	30½	30¼	57½	61½	63½	65½	6	21½	25½	27½	29½	29¼	34	36½	35½	16-1	11¼	27¾	364T	27¾	364T
33	33	39	37	5½	30½	30¼	59½	63½	65½	67½	6	23½	27½	29½	31½	29¼	34	39¾	38¾	16-1	12¼	27¾	364T	27¾	364T
36	36½	46	44	6	31¾	31¾	63¾	67¾	69¾	71¾	7	26¾	30¾	32¾	34¾	30½	41	44½	42¾	16-1	13¾	29	365T	29	365T
40	40¼	46	44	6	31¾	31¾	66¾	70¾	72¾	74¾	7	28¾	32¾	34¾	36¾	30½	41	47½	46½	24-1	14¾	29	365T	29	365T
44	44½	56	54	6	52	52	73¾	77¾	79¾	81¾	8	31¾	35¾	37¾	39¾	34½	51	52½	51½	24-1	16¼	31½	405T	31½	405T
49	49	56	54	6	52	52	77	81	83	85	8	34¾	38¾	40¾	42¾	34½	51	57½	56½	24-1	17¾	31½	405T	31½	405T
54	54¼	62	59	6	NA	NA	See below.				8	39¼	43¼	45¼	47¼	See below.		56	63	61½	24-1	19¾	See below.		
60	60	69	66	6	NA	NA	See below.				8½	43½	47½	49½	51½	See below.		63	69¾	68¾	24-1	21¾	See below.		

*O.D. of blades. ●Plus corner holes. †800° for 6" panel only. †P is square dimension of panel. Tolerance: ±1/8"
 Mounting panel thickness: Sizes 12-22, 10 gauge; Sizes 24-40, 7 gauge; Sizes 44/60, 1/4". Sizes 54/60, 3/8".
 ■In some cases, larger frame motors may fit. In all cases, maximum motor frame size is limited to C-NW maximum dimension.

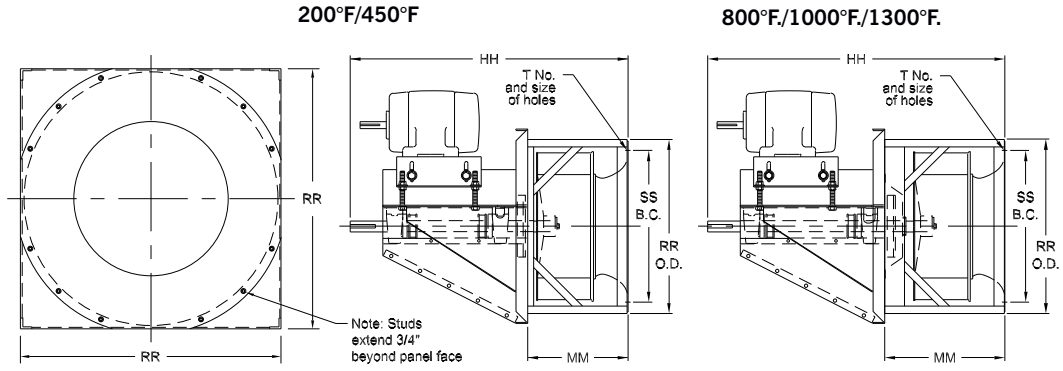
SIZE 54 AND 60 DIMENSIONS AND SPECIFICATIONS													
Size	Motor Frame	H					HH					N	Max C-NW
		200°F./450°F.	800°F.		1000°F. & 1300°F.		200°F./450°F.	800°F.		1000°F. & 1300°F.			
			4"	6"	6"	8"		4"	6"	6"	8"		
54	≤405T	84¾	88¾	90¾	90¾	92¾	78	82	84	84	86	37½	34¾
54	444T/445T	91½	95½	97½	97½	99½	84¾	88¾	90¾	90¾	92¾	44¼	41¾
54	447T	96¾	100¾	102¾	102¾	104¾	89¾	93¾	95¾	95¾	97¾	49½	46¾
60	≤405T	89½	93½	95½	95½	97½	81½	85½	87½	87½	89½	37½	34¾
60	444T/445T	95¾	99¾	101¾	101¾	103¾	88¾	92¾	94¾	94¾	96¾	44¼	41¾
60	447T/449T	106¼	110¼	112¼	112¼	114¼	98¾	102¾	104¾	104¾	106¾	54½	51¾

SIZE 54/60 PLUG FANS WITH INTEGRAL INLET CONE ASSEMBLY - BARE FAN WEIGHTS											
Size	Class	Motor Frame Size	Uninsulated				Insulated				
			200°F./450°F.	800°F		800°F		1000°F		1300°F	
				6"	8"	6"	8"	6"	8"	6"	8"
54	2	405T	1760	1890	1900	1990	2020	2020	2050	-	-
54	2	444T/445T	1930	2070	2070	2170	2200	2200	2230	-	-
60	2	405T	1950	2100	2100	2220	2250	2250	2290	-	-
60	2	444T/445T	2130	2280	2290	2400	2440	2440	2480	-	-
54	3	405T	1820	1970	1980	2070	2100	2100	2130	2100	2130
54	3	444T/445T	2000	2150	2160	2250	2280	2280	2320	2280	2320
54	3	447T	2130	2410	2420	2510	2540	2540	2570	2540	2570
60	3	405T	2020	2290	2300	2410	2450	2450	2490	2450	2490
60	3	444T/445T	2210	2480	2490	2610	2650	2650	2690	2650	2690
60	3	447T/449T	2590	2790	2800	2910	2950	2950	2990	2950	2990

PLUG FANS WITH INTEGRAL INLET-CONE ASSEMBLIES

DERATES

The integral inlet-cone assembly incorporates reduced-depth inlet cones in Sizes 18 through 49 (not available Size 20) for substantial reduction in fan depths ranging from 2" on the Size 18 to 6" on the Size 49. Due to the shorter-length cone, air performance derates are required as follows: Size 18-8%, Size 22-4 1/2%, and Size 24-3%. Size 20 and Sizes 27 and larger do not require a derate.



DIMENSIONS [INCHES] PLUG FANS WITH ACF AND PLR WHEELS

Size	HH Class 2				HH Class 3				MM						RR	SS	T
	200°F/ 450°F.	800°F.	1000°F.		200°F/ 450°F.	800°F.	1000°F./1300°F.		200°F/ 450°F.	800°F.	800°F./1000°F.	1000°F.	1300°F.	1300°F.			
			6" panel	8" panel			6" panel	8" panel									
12	34 1/4	38 1/4	NA	NA	NA	NA	NA	NA	10 1/16	14 1/16	16 1/16	NA	NA	NA	17	14 5/8	8-11/16
15	35 3/8	39 3/8	NA	NA	NA	NA	NA	NA	11 3/16	15 3/16	17 3/16	NA	NA	NA	17	17 7/8	14-11/16
18	40 1/8	44 1/8	46 1/8	48 1/8	40 1/8	44 1/8	46 1/8	48 1/8	12 1/16	16 1/16	18 1/16	20 1/16	18 1/16	20 1/16	24	19 3/4	16-7/8
20	43 1/4	47 1/4	49 1/4	51 1/4	43 1/4	47 1/4	49 1/4	51 1/4	15 1/8	19 1/8	21 1/8	23 1/8	21 1/8	23 1/8	24	23 1/2	12-7/8
22	42 1/8	46 1/8	48 1/8	50 1/8	42 1/8	46 1/8	48 1/8	50 1/8	14 1/16	18 1/16	20 1/16	22 1/16	20 1/16	22 1/16	24	24	12-7/8
24	47 1/4	51 1/4	53 1/4	55 1/4	47 1/4	51 1/4	53 1/4	55 1/4	15 9/16	19 9/16	21 9/16	23 9/16	21 9/16	23 9/16	29	26 1/8	16-7/8
27	48 1/2	52 1/2	54 1/2	56 1/2	48 1/2	52 1/2	54 1/2	56 1/2	16 13/16	20 13/16	22 13/16	24 13/16	22 13/16	24 13/16	29	29 1/8	12-1
30	53 3/4	57 3/4	59 3/4	61 3/4	53 3/4	57 3/4	59 3/4	61 3/4	18 1/2	22 1/2	24 1/2	26 1/2	24 1/2	26 1/2	34	31 3/4	16-1
33	55 3/8	59 3/8	61 3/8	63 3/8	55 3/8	59 3/8	61 3/8	63 3/8	20 1/8	24 1/8	26 1/8	28 1/8	26 1/8	28 1/8	35	35 1/8	12-1
36	59 3/8	63 3/8	65 3/8	67 3/8	59 3/8	63 3/8	65 3/8	67 3/8	21 7/8	25 7/8	27 7/8	29 7/8	27 7/8	29 7/8	41	38 3/8	16-1
40	61 1/2	65 1/2	67 1/2	69 1/2	61 1/2	65 1/2	67 1/2	69 1/2	24	28	30	32	30	32	42	42 3/8	12-1
44	68 3/8	72 3/8	74 3/8	76 3/8	68 3/8	72 3/8	74 3/8	76 3/8	26 1/4	30 1/4	32 1/4	34 1/4	32 1/4	34 1/4	51	46 5/8	24-1
49	71	75	77	79	71	75	77	79	28 7/8	32 7/8	34 7/8	36 7/8	34 7/8	36 7/8	51	51 1/8	20-1
54	See page 25.								32 1/2	36 1/2	38 1/2	40 1/2	38 1/2	40 1/2	56 3/8	56 1/8	24-1
60	See page 25.								35 5/8	39 5/8	41 5/8	43 5/8	41 5/8	43 5/8	63 3/8	61 5/8	24-1

NA=Not available

Tolerance: ±1/8"

DIMENSIONS [INCHES] PLUG FANS WITH ECF WHEELS

Size	H	HH (Class 2 & 3)				M ▲	MM (Class 2 & 3)				RR	SS	T
		200°F/ 450°F.	800°F		200°F/ 450°F.		800°F	800/1000°F	1000°F				
			4"	6"						4"			
18	42 5/8	40 5/8	44 5/8	46 5/8	14 1/2	12 1/2	16 1/2	18 1/2	20 1/2	24	19 3/4	16-7/8	
20	43 7/8	43 7/8	47 7/8	49 7/8	15 3/4	15 3/4	19 3/4	21 3/4	23 3/4	24	23 1/2	12-7/8	
22	45 1/2	42 7/8	46 7/8	48 7/8	17 3/8	14 13/16	18 13/16	20 13/16	22 13/16	24	24	12-7/8	
24	50 3/4	48	52	54	19	16 1/2	20 1/4	22 1/4	24 1/4	29	26 1/8	16-7/8	
27	52 1/4	49 1/4	53 1/4	55 1/4	20 1/2	17 9/16	21 9/16	23 9/16	25 9/16	29	29 1/8	12-1	
30	57 7/8	54 1/2	58 1/2	60 1/2	22 5/8	19 1/4	23 1/4	25 1/4	27 1/4	34	31 3/4	16-1	
33	60 1/8	56 3/8	60 3/8	62 3/8	24 7/8	21 1/16	25 1/16	27 1/16	29 1/16	35	35 1/8	12-1	
36	64 7/8	60 3/8	64 3/8	66 3/8	27 3/8	22 13/16	26 13/16	28 13/16	30 13/16	41	38 3/8	16-1	
40	67 3/8	62 1/2	66 1/2	68 1/2	29 7/8	25	29	31	33	42	42 3/8	12-1	
44	75	69 1/2	73 1/2	75 1/2	32 7/8	27 3/8	31 3/8	33 3/8	35 3/8	51	46 5/8	24-1	
49	78 1/4	72 1/2	76 1/2	78 1/2	36 1/8	30 1/8	34 1/8	36 1/8	38 1/8	51	51 1/8	20-1	
54*	86 1/8	79 3/8	83 3/8	85 3/8	40 5/8	33 13/16	37 13/16	39 13/16	41 13/16	56 3/8	56 1/8	24-1	
54†	92 7/8	86 1/8	90 1/8	92 1/8	40 5/8	33 13/16	37 13/16	39 13/16	41 13/16	56 3/8	56 1/8	24-1	
54‡	97 3/4	91	95	97	40 5/8	33 13/16	37 13/16	39 13/16	41 13/16	56 3/8	56 1/8	24-1	
60*	90 3/4	83 1/4	87 1/4	89 1/4	44 3/4	37 1/4	41 1/4	43 1/4	45 1/4	63 3/8	61 5/8	24-1	
60†	97 1/2	90	94	96	44 3/4	37 1/4	41 1/4	43 1/4	45 1/4	63 3/8	61 5/8	24-1	
60‡	107 7/8	100 3/8	104 3/8	106 3/8	44 3/4	37 1/4	41 1/4	43 1/4	45 1/4	63 3/8	61 5/8	24-1	

Motor Sizes: *≤405T motor, † 444T/445T motor, ‡ 447T/449T motor.▲ Dimensions shown are for 200°F/450°F plug fans. For higher temp. fans add PAGE 26 4", 6" or 8" per dimension "x" on pg.24 to accommodate panel/wall thickness

DIMENSIONS AND SPECIFICATIONS [INCHES, POUNDS, WR² IN LB.-FT.²]

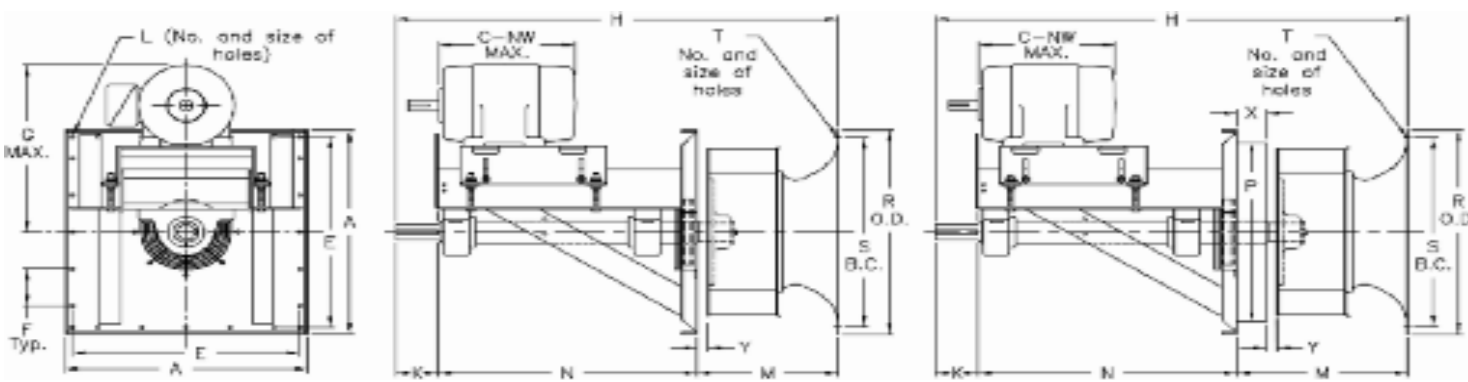
CLASS 4 DIMENSIONS [INCHES]																					
Size	Wheel dia.*	A	E	F [•]	G max.			H			K	M			N	P†	R	S	Wheel cone clear.	C-NW [■] max.	Max. motor frame [■]
					200°F./450°F.	800°F.	800°F./1000°F.	200°F./450°F.	800°F.	800°F./1000°F.		200°F./450°F.	800°F.	800°F./1000°F.							
18	18¼	28	26	6	28¾	29¼	29½	43½	47½	49½	4½	14	18	20	25	24	22¾	21¾	7	24	286T
20	20⅞	28	26	6	28¾	29¼	29½	44⅞	48⅞	50⅞	4½	15⅞	19⅞	21⅞	25	24	24½	23½	7⅞	24	286T
22	22¼	28	26	6	28¾	29¼	29½	46⅞	50⅞	52⅞	4½	16⅞	20⅞	22⅞	25	24	27⅞	26⅞	8¼	24	286T
24	24½	33	31	6	33	33⅞	34½	54½	58½	60½	6	18¼	22¼	24¼	30¼	29	30½	29⅞	9⅞	29¼	365T
27	27	33	31	6	33¼	33½	34⅞	56	60	62	6	19¾	23¾	25¾	30¼	29	33⅞	31¾	10⅞	29¼	365T
30	30	39	37	5½	36	36⅞	36⅞	64⅞	68⅞	70⅞	7	21⅞	25⅞	27⅞	35¼	34	36½	35⅞	11¼	34¼	405T
33	33	39	37	5½	36	36⅞	36⅞	66⅞	70⅞	72⅞	7	23⅞	27⅞	29⅞	35¼	34	39¾	38⅞	12¼	34¼	405T

*O.D. of blades. •Plus corner holes. †P is square dimension of panel. Tolerance: ±1/8"
 Mounting panel thickness is 1/4" for all sizes.
 ■In all cases, maximum motor frame size is limited to C-NW maximum dimension.

CLASS 4 PLUG FANS																	
Size	Bare Fan Weights				Wheel WR ²			Shaft diameter									
	AcF/PLR				AcF	PLR	SST PLR	200°F./450°F.			800°F. Uninsulated			800°F. Insulated/1000°F.			
	200°F./450°F.	800°F. Uninsulated	800°F. Insulated	1000°F.				at wheel	at bearings	at drive	at wheel	at bearings	at drive	at wheel	at bearings	at drive	
	18	435	525	550	555	14	12	15	1½/16	2³/16	1½/16	27/16	2¹¹/16	27/16	27/16	27/16	2¹⁵/16
20	448	538	532	567	26	27	27	1½/16	2³/16	1½/16	27/16	2¹¹/16	27/16	27/16	27/16	2¹⁵/16	27/16
22	460	550	570	575	36	32	32	1½/16	2³/16	1½/16	27/16	2¹¹/16	27/16	27/16	27/16	2¹⁵/16	27/16
24	615	710	830	835	54	53	53	2³/16	27/16	2³/16	27/16	2¹⁵/16	27/16	27/16	2¹⁵/16	37/16	27/16
27	675	730	845	850	78	78	76	27/16	2¹¹/16	27/16	27/16	2¹⁵/16	27/16	27/16	2¹⁵/16	37/16	27/16
30	880	1030	1050	1055	120	120	132	27/16	2¹⁵/16	27/16	2¹⁵/16	37/16	27/16	27/16	2¹⁵/16	37/16	27/16
33	910	1055	1070	1075	185	170	189	27/16	2¹⁵/16	27/16	2¹⁵/16	37/16	27/16	27/16	2¹⁵/16	37/16	27/16

Bearings: Heavy Duty Ball, Concentric Lock. **nyb** reserves the right to substitute bearings of equal ratings.

CLASS 4	200°F./450°F. and 800°F. Uninsulated	800°F. and 1000°F. Insulated
----------------	---	-------------------------------------



Y = 1½" on all models. X = 4" on 800°F. fans, 6" on 1000°F. fans. Dimensions not to be used for construction unless certified.
 L = All holes 9/16" diameter and on centerline. Sizes 18-27, 24 holes; Sizes 30-33, 32 holes.
 T dimensions are the same as Class 2/3.